

Lead Service Line Inventory and Replacement Plan

Final Report

MassDEP's Small System Service Line Inventory and
Lead Service Replacement Plan Technical Assistance Program
BWR-RFQ-2023-LSLPP

Prepared for:

Housatonic Water Works Company

PWS ID: 1113003

80 Maple Ave #1

Great Barrington, MA 01230

Prepared by:

Comprehensive Environmental, Inc.

41 Main Street

Bolton, MA 01740

October 2024



Table of Contents

1	Introduction	3
1.1	Background	3
1.2	Document Purpose	3
2	Data Collection and Schema Development	4
2.1	Project Initiation and Data Collection	4
2.2	Data Schema Development	6
3	Inventory Development	6
3.1	Populate Inventory	6
3.2	Public and Private Side Screening	6
4	Crowd Sourced Data Collection and Inventory Updates	8
4.1	Outreach Methods	8
4.2	Outreach Results	8
5	Inventory Results	9
6	Lead Service Line Replacement Plan	11
6.1	Overview of LSL Replacement Requirements	11
6.2	Strategy for Addressing Data Gaps	15
6.3	Prioritized Replacement Strategy and Goal Rate	18
6.4	LSL Replacement Procedures	19
6.5	Customer Communication Procedures	21
6.6	Funding Strategy	23
6.7	Flushing Procedures and Filters	23
6.8	Replacement Plan Summary	23

List of Tables

Table 2-1.	List of Relevant Data Sources	5
Table 3-1.	Summary of Public and Private Side Logic Screening Steps	7
Table 5-1.	Inventory Service Line Counts	10
Table 5-2.	Inventory Service Line Summary	10
Table 6-1.	Prioritization Matrix for Data Gap Investigations	17
Table 6-2.	Prioritization of "Sensitive" Populations	18
Table 6-3.	Summary of LSL Replacement Plan	25

List of Figures

Figure 6-1. LSL Replacement Requirements Flow Chart 1	12
Figure 6-2. LSL Replacement Requirements Flow Chart 2	13
Figure 6-3. LSL Replacement Requirements Flow Chart 3	14

List of Appendices

Appendix A (ELECTRONIC):	Lead Service Line Inventory
Appendix B:	Lead Service Line Replacement Program Tracking Form
Appendix C:	Customer Communications
Appendix D:	Publicly Accessible Lead Service Line Inventory

1 Introduction

1.1 Background

In 1991 the United States Environmental Protection Agency promulgated regulations known as the Lead and Copper Rule (LCR) under the authority of the 1974 Safe Drinking Water Act. Lead and Copper Rule Revisions (LCRRs), finalized in 2021, require all Public Water Suppliers (PWSs) to complete an initial inventory of service lines connected to the distribution system and an associated replacement plan.¹ The Lead Service Line (LSL) inventory and replacement plan was due on **October 16, 2024** and must be made available to the public.

The Housatonic Water Works Company (HWWC) was accepted into the Massachusetts Department of Environmental Protection's (MassDEP) Small System Service Line Inventory and Lead Service Line Replacement Plan Technical Assistance Program (BWR-RFQ-2023-LSLPP). Comprehensive Environmental (CEI) helped MassDEP implement this free assistance program and provided the PWS with technical assistance to prepare the required LSL and replacement plan.

1.2 Document Purpose

The purpose of this document is to summarize technical assistance activities. Key activities were to:

- Initiate contact with the PWS and perform data collection.
- Create an inventory based on collected data.
- Expand the inventory through crowd sourced data collection.
- Create a publicly accessible inventory.
- Identify data gaps and generate a lead service line replacement plan.

¹ US EPA Revised Lead and Copper Rule Information: <https://www.epa.gov/ground-water-and-drinking-water/revised-lead-and-copper-rule>.

2 Data Collection and Schema Development

2.1 Project Initiation and Data Collection

The project was initiated by coordinating with the PWS to collect data from as many sources as possible.

- A data request was issued to HWWC via email on January 4, 2024 to understand which data types were available to initiate the inventory. Data request items included:
 - Customer information for each service connection, including address / parcel served
 - GIS data and paper maps and record drawings of distribution system
 - Original water service tie cards
 - Water meter installation records
 - Billing information
 - Permit files and records (e.g., building permits, plumbing permits)
 - Inspection and maintenance records
 - Misc. relevant documents (e.g., capital improvement plans, master plans)
 - Any senior staff, building inspectors and other relevant sources knowledgeable about historical operations of the water system
- James Mercer with HWWC provided several data sources as summarized by **Table 2-1**.
- Relevant data were stored in a centralized location for subsequent screening, sorting, and inventory development.

Table 2-1. List of Relevant Data Sources

Data Source ID	Description	Original File Name	Source	Notes
1	Customer List	Customer and address list for HWW.xls	HWWC provided an electronic file to CEI via email on January 4, 2024.	List of 825 service accounts (dated January 4, 2024) identified by street address and customer name.
2	Geodatabase Folder	HousatonicMA-Water.gdb	HWWC provided an electronic file to CEI via email on January 4, 2024.	The folder contains numerous geodatabase-related files which provide water main information including material, size, water features, gate valves, and hydrants.
3	Housatonic Water System Map	HousatonicWaterSystem_36x48.pdf	HWWC provided an electronic file to CEI via email on January 4, 2024.	Map of entire Housatonic water system which traverses portions of Great Barrington, Stockbridge, and West Stockbridge. It is marked up with materials and sizes. Does not include year installed values.
4	LCR Sites	LCR Sampling Sites.jpg	HWWC provided to CEI via text message on August 5, 2024.	LCR-C Form with DEP approved LCR sampling locations.
5	HWWCO Service Line Survey	HWWCO Service Line Survey.pdf	HWWC provided to CEI via email on September 11, 2024.	HWWC staff reviewed the initial inventory CEI was able to complete with available data. HWWC staff were able to update private service line materials for numerous properties by historical knowledge of the properties.
6	Customer Surveys - Paper	_Surveys Combined.pdf	Customer self-identification paper surveys completed and sent to CEI.	Responses from water services customers who completed the paper survey mail out with the water bills in April and May 2024. Completed surveys were mailed either to HWWC or to CEI directly.
7	Customer Surveys - Online	Online Surveys 8.5.24.xls	Customer self-identification completed online surveys sent to CEI.	Responses from water service customers who completed the online survey created by CEI. A link to the online survey was also made available on the
8	Customer Surveys - Call-in	Housatonic Survey Support Log.xls	Customer self-identification calls to CEI.	Responses from water services customers who called CEI directly to provide information.
9	Parcel Data	Parcel Data.xls	Towns of Great Barrington, Stockbridge, and West Stockbridge GIS parcel data.	Parcel data collected from the Great Barrington, Stockbridge, and West Stockbridge GIS files.
10	HWWC Personnel Discussions	HWWC Discussion 10.11.24.txt	HWWC personnel informed CEI via phone of various public and private SL material updates on October 11, 2024.	Following a review of the draft LSL inventory and replacement plan, Jim Mercer of HWWC contacted via phone CEI to discuss a few edits to the inventory and draft report.

2.2 Data Schema Development

Once data were obtained, a data schema template was created based on the recommended MassDEP data structure.² Some additional fields were added to the recommended MassDEP structure as summarized below. See **Appendix A** for the completed data schema.

- Customer information (i.e., Parcel ID, Account Type)
- Screening information (i.e., Building Year Built, Water Main Material, and Basis of Service Line Material Classification, for both Public and Private sides)

3 Inventory Development

A lead service line inventory was performed based on available data as summarized below.

3.1 Populate Inventory

The lead service line inventory was initiated as follows:

- Created a (blank) LSL inventory spreadsheet to record data following the data schema template (see **Appendix A**).
- Populated the inventory spreadsheet with available data from the sources in **Table 2-1**.

3.2 Public and Private Side Screening

A screening analysis was then performed on the “PUBLIC” and “PRIVATE” sides to begin assigning material information for service lines.

- The **Public Side** is defined as the service line pipe material from the water main to curb stop.
- The **Private Side** is defined as the service line pipe material from the curb stop to the water meter.

Though both the “public” and “private” portions of the HWWC service lines are owned by the private property owner, the service line materials for each section may differ, and therefore both sections must be recorded separately. There was minimal data available to screen the “public” side. “Private” side screening logic was configured based on the Year Built from MassGIS and customer surveys as described in **Section 4.2**. Refer to **Table 3-1** for a detailed description of screening logic. Screening logic was implemented sequentially to systematically assign values before moving to the next step.

² MassDEP LSL Inventory Workbook Template (version 6/5/2023): <https://www.mass.gov/doc/service-line-inventory-excel-workbook-version-103>.

Table 3-1. Summary of Public and Private Side Logic Screening Steps

Logic Step	Logic Description	Logic Rule	Logic Rationale
1	There are no records for the "Public" service lines nor are water main installation dates available, therefore, there is no information provided for the "Public" service lines on this inventory.	[PUBLIC_SL_MATERIAL] = "UNK-LG"	In the absence of any other information, the public side of each service must be assumed to be potentially lead to be conservative.
2	If a customer survey (whether online, mail-in, or call-in) provided Private service line material, then the Private material was verified (when possible) and utilized.	IF customer survey contained pipe material (and CEI verified when applicable), THEN [PRIVATE_SL_MATERIAL]	If a customer provided an online survey with a picture, CEI reviewed and verified pipe material. CEI changed material if picture evidence suggested otherwise. In cases where no picture was provided either via the online survey, mail-in survey, or call-in survey, CEI honored the customer's identification.
3	If HWWC provided update to public or private service line material, then the updated material was noted.	IF HWWC provided a updated private service line material for a property on the HWWCO Service Line Survey.pdf from September 11, 2024, THEN [PRIVATE_SL_MATERIAL] or [PUBLIC_SL_MATERIAL] was corrected as such.	HWWC staff reviewed the initial inventory and had undocumented knowledge of public and private service line materials for various properties which they provided to CEI for updates.
4	If the building served by the water service line was built in 1986 or later and the Private material is unknown, then the Private service is assumed to not contain lead. All other values were assumed to potentially contain lead.	IF [YEAR_BUILT] ≥ 1986 AND [PRIVATE_SL_MATERIAL] = "BLANK", THEN [PRIVATE_SL_MATERIAL] = "UNK-NOLG - Unknown, Definitely does not contain lead" ELSE [PRIVATE_SL_MATERIAL] = "UNK-LG - Unknown, may contain lead and/or galvanized"	The lead ban went into effect in Massachusetts on January 1, 1986. If the parcel was developed in or after 1986, then the private side would be assumed to not contain lead. All other values were assumed to potentially contain lead for conservatism.
5	If private material is known to be lead then entire line is lead. If private material is not lead or is unknown, then lead status is unknown.	IF [PRIVATE_SL_MATERIAL] = "Lead", THEN [ENTIRE_SERVICE_LINE_CLASSIFICATION] = Lead, IF [PRIVATE_SL_MATERIAL] = "Galvanized Steel", THEN [ENTIRE_SERVICE_LINE_CLASSIFICATION] = "Galvanized Requiring Replacement", ELSE [ENTIRE_SERVICE_LINE_CLASSIFICATION] = "Lead Status Unknown"	Since there is no information for the public service line materials, refer to the private service line material to classify the entire service line. If the private service line is lead then the entire service line is classified as "Lead". If the private service line is galvanized steel, then the entire line is "galvanized requiring replacement". Otherwise, the entire service line is classified as "Lead Status Unknown".

Table Notes:

- Logic steps performed sequentially to systematically screen.

2. HWWC does NOT own any portion of the service lines, therefore, there is no "Public" side of the service line. However, to designate the separate portions of the service line (upstream of the curb stop vs. downstream of the curb stop), the accepted verbiage of "Public" and "Private" were still utilized.
3. There are no physical records for the "Public" service lines. Additionally, water main records are unable to be utilized to confirm whether or not "Public" service lines may contain lead because HWWC is not responsible for any portion of the service lines.

4 Crowd Sourced Data Collection and Inventory Updates

The next step was to improve and expand the inventory through crowd sourced data collection to verify the status of unknown service lines on the private side.

4.1 Outreach Methods

The following verification steps were taken on the **private side** for **all** water customers.

- Create Survey: A web-based survey was created using ArcGIS Survey123. The survey was accessible via tablet, phone, or any internet connected device and will provide step-by-step instructions for customers to locate service lines, identify material, and document with photographs. The survey was created to match the data structure and required fields from the MassDEP developed web app and also included questions to identify interior plumbing materials (<https://app.smartsheet.com/b/form/f9ee39b7972f443ca63e8b936cd7f92b>). The form included optional fields for the customer to enter their email address and phone number and a question on whether it is acceptable to contact them with follow-up questions related to the survey results.
- Distribute Survey: The survey was distributed to all customers via mail by the Water Company. CEI initiated the outreach process with the Water Company in **March 2024 and April 2024** water bill mailings. Mailings included a letter with a survey access link, QR code, supporting information on why the survey is being completed, an option to complete a paper survey, and contact information for questions. Additionally, HWWC posted the survey on their website for public access.
- Review Surveys: Results from the online survey were uploaded to ArcGIS Online as they were completed by customers and results from the paper survey were received by mail. Results were then reviewed by the project team and input into the master inventory. Any potential errors or questions were flagged for future follow up.

4.2 Outreach Results

Prior to Customer Outreach, approximately 100% of “private” service lines were of unknown material. Since limited data was available from HWWC, CEI relied on customer-provided information of the “private” service line information for screening purposes. Of the 825 service customers who were contacted, CEI received 93 mail-in paper surveys, 98 online surveys, and 4 call-ins. CEI reviewed each water service line picture submitted with online surveys to confirm material type when possible. In some instances, the material type from online surveys was adjusted if the photo did not appear what the customer had self-reported. For mail-in and call-in surveys, the customer’s designated material type was not adjusted. In all cases where either no response was provided for a service connection or a customer did not know the material and CEI was unable to confirm, the building year was used to determine if the “private” service line was either possibly lead or definitely not lead, as outlined in **Table 3-1**.

5 Inventory Results

The inventory was populated based on data collection sources (**Section 2**), screening steps (**Section 3**), and customer outreach (**Section 4**). Results are summarized by **Table 5-1** and **Table 5-2**. See **Appendix A** for the completed inventory. Results indicate that:

- Approximately **72% (591)** of “private” service lines are of unknown material that could contain lead.
- Over **99% (822)** of “public” service lines are of unknown material that could contain lead.
- **Twenty-five (25)** service lines were identified as galvanized requiring replacement. **It is recommended that the PWS verifies the identified GRR lines as outlined in Section 6.2.**

Table 5-1. Inventory Service Line Counts

Material	Material Counts	
	Public Side	Private Side
Lead	0	0
Copper	1	119
Galvanized	0	25
Plastic	1	16
Ductile Iron	0	0
Lined Cast Iron	0	0
Unlined Cast Iron	0	0
Brass	1	1
Other	0	0
Unknown, may contain lead and/ or galvanized	822	591
Unknown, definitely does not contain lead or galvanized	0	73
Total Number of Service Connections	825	825
Percent Lead Status Unknown	99.6%	71.6%

Table 5-2. Inventory Service Line Summary

Description	Public Side	Private Side	Entire Service Line
Lead	0	0	0
Non-Lead	3	209	0
Galvanized Requiring Replacement	0	25	25
Lead Status Unknown	822	591	800
Total Number of Service Connections	825	825	825
Percent Lead Status Unknown	99.6%	71.6%	97%

Table Notes:

1. There is minimal current “public” service material information available. Additionally, because no portion of the service line is the responsibility of HWWC, the water main information cannot be utilized to identify whether or not the “public” service line material may be lead.
2. Twenty-five (25) service lines were found to be galvanized requiring replacement (GRR) due to the “private” galvanized lines being downstream of unknown (may contain lead) “public” service line material. These materials have not yet been confirmed by the PWS. It is recommended that these investigations are prioritized as outlined in **Section 6.2**.

6 Lead Service Line Replacement Plan

This Lead Service Line Replacement Plan (LSLRP) includes the following sections:

- A strategy for determining the composition of remaining “**Lead Status Unknown**” service lines in the inventory (**Section 6.2**).
- A lead service line replacement goal rate and prioritization strategy (**Section 6.3**).
- A procedure for conducting full lead service line replacement and proper disposal of removed LSLs (**Section 6.4**).
- Customer communication procedures (**Section 6.5**).
- A funding strategy for conducting lead service line replacements (**Section 6.6**).
- A procedure for customers to flush service lines and premise plumbing of particulate lead (**Section 6.7**).

6.1 Overview of LSL Replacement Requirements

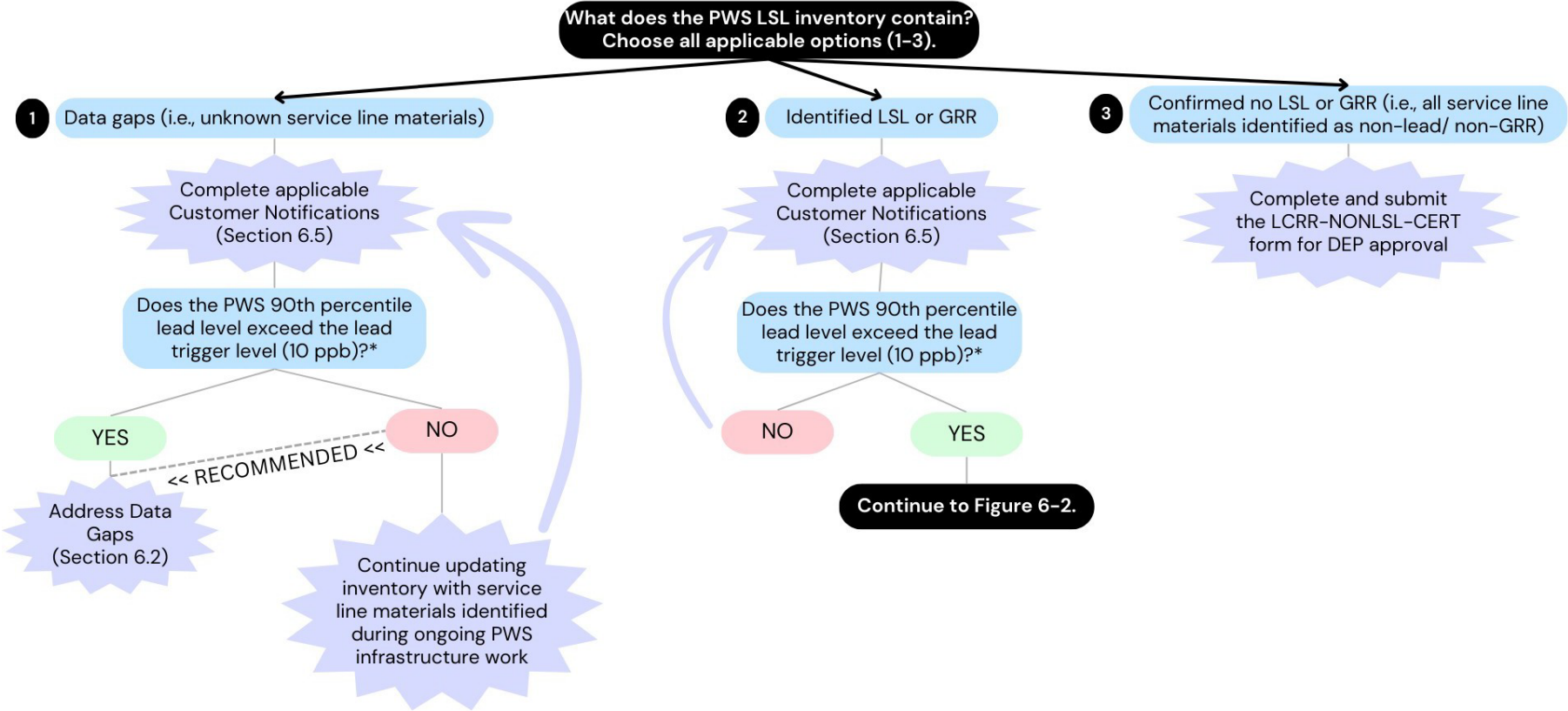
Figure 6-1, Figure 6-2, and Figure 6-3 below provide flow charts outlining LSL replacement requirements based on the materials contained in the inventory, LCR sampling results, and ownership of service lines. Refer to the following sections of this report for detailed procedures for each task.

Important:

- This plan was prepared based on MassDEP Guidance and in accordance with the 2021 LCRR. The requirements are subject to updates pending the publication of EPA’s Lead and Copper Rule Improvements (LCRI), anticipated to be finalized in **October 2024**. See **Section 6.8** for more information on how the proposed LCRI may change replacement plan requirements.^{3,4}
- Based on the results from the inventory, the PWS should follow **Paths #1 (Data gaps) and #2 (Identified LSL or GRR)** on **Figure 6-1**.

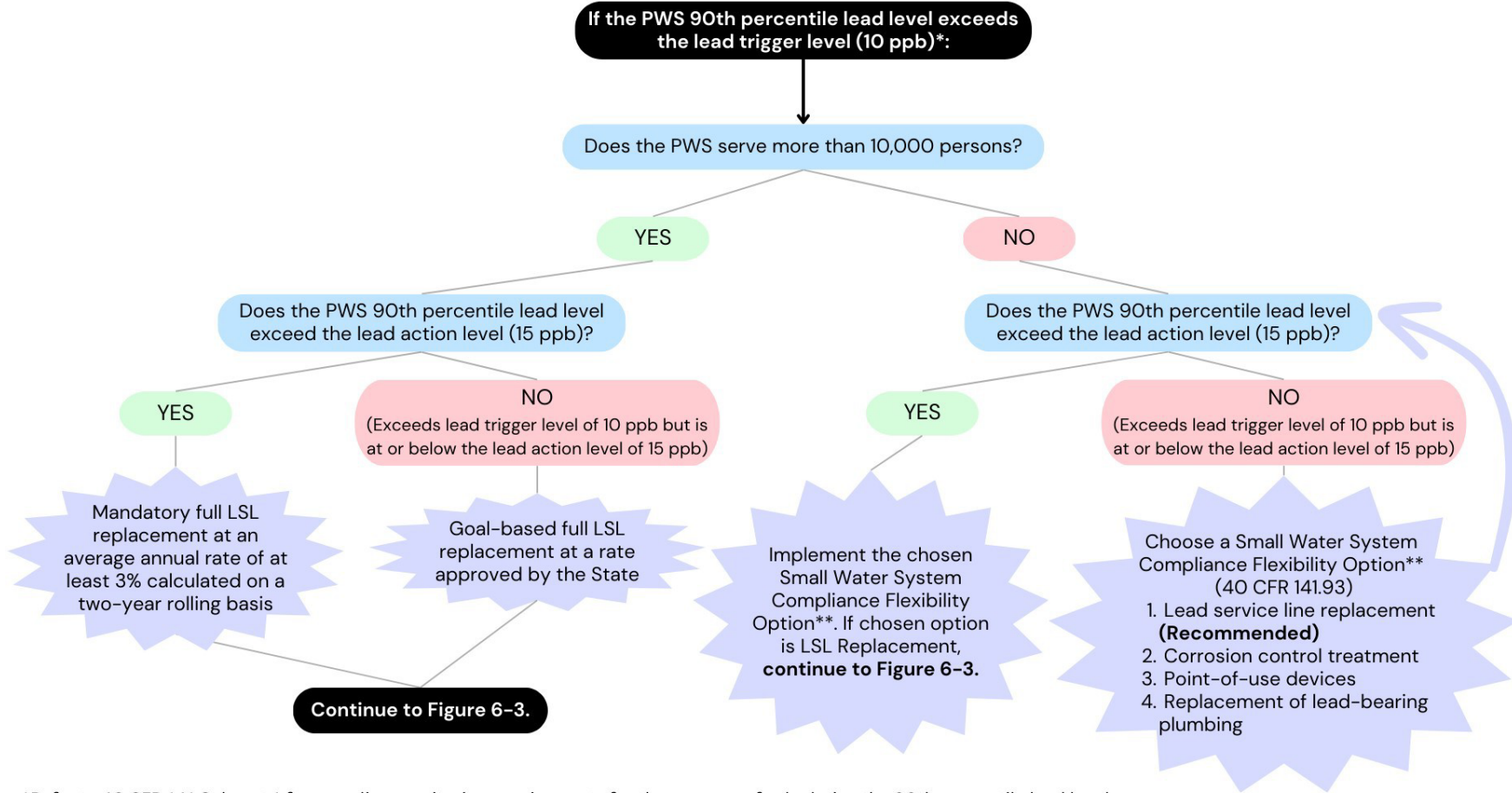
³ MassDEP Lead Service Line Replacement Summary Form:
<https://app.smartsheet.com/b/form/8f676b18cc224884a7069e3cc727f968>

⁴ EPA. Proposed Lead and Copper Rule Improvements. Available at: <https://www.epa.gov/ground-water-and-drinking-water/proposed-lead-and-copper-rule-improvements#Support>



*Refer to 40 CFR 141 Subpart 1 for sampling monitoring requirements for the purpose of calculating the 90th percentile lead level.

Figure 6-1. LSL Replacement Requirements Flow Chart 1



*Refer to 40 CFR 141 Subpart 1 for sampling monitoring requirements for the purpose of calculating the 90th percentile lead level.

**Refer to 40 CFR 141.93 for more information on the Small Water System Compliance Flexibility Options.

Figure 6-2. LSL Replacement Requirements Flow Chart 2

Note: The requirements outlined in this figure are in accordance with the 2021 LCRR and are subject to updates pending the publication of EPA’s Lead and Copper Rule Improvements (LCRI), anticipated to be finalized in October 2024. See **Section 6.8** for more information on how the proposed LCRI may change replacement plan requirements.

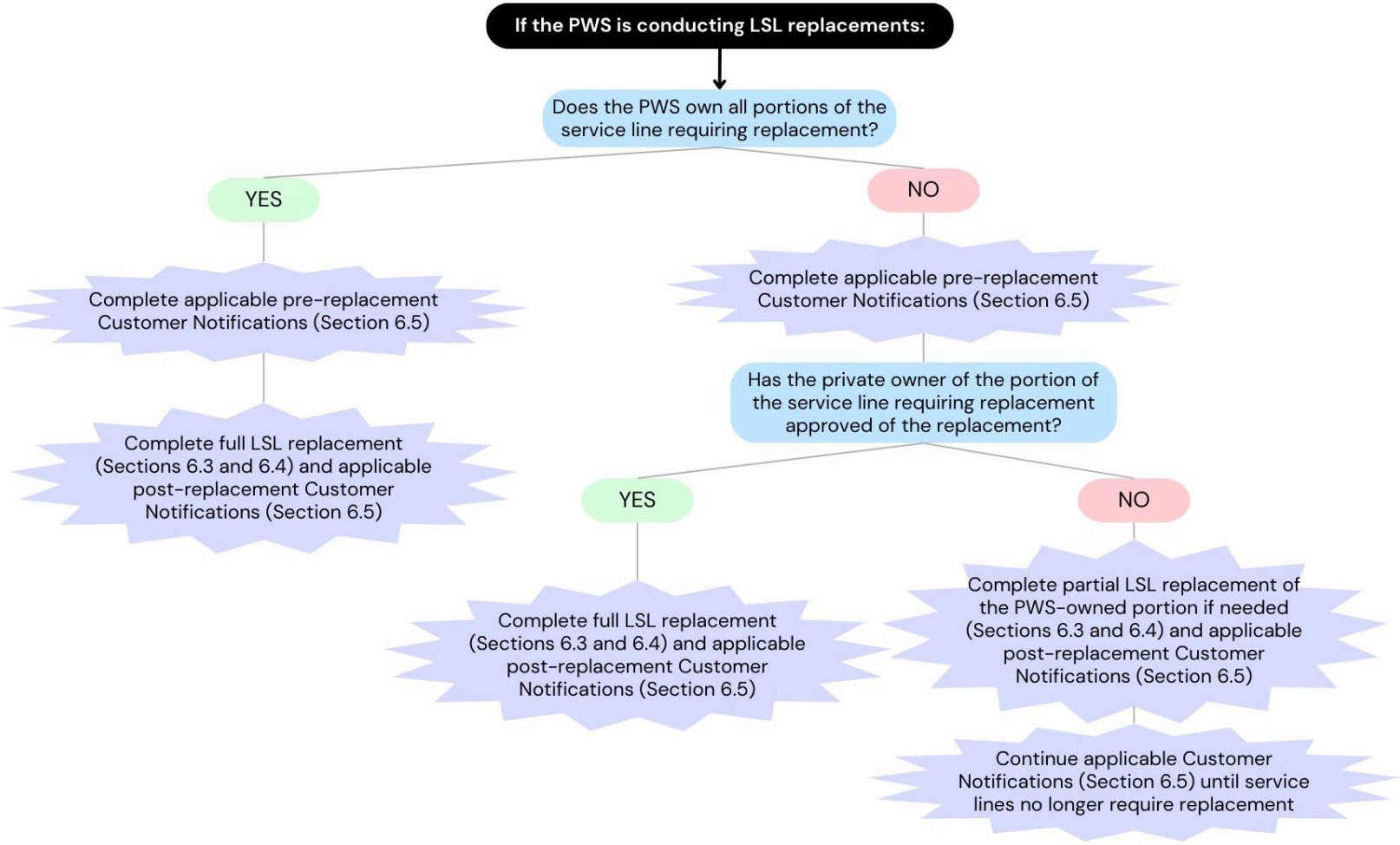


Figure 6-3. LSL Replacement Requirements Flow Chart 3

6.2 Strategy for Addressing Data Gaps

As outlined in **Sections 3 and 4**, the LSL inventory was created through record review, updated through crowd sourced data collection, and tracked on a spreadsheet. As summarized by **Table 5-2**, no lead service lines were identified and 25 GRR service lines were identified. There were also several service lines of unknown material that may contain lead and require further identification.

6.2.1 Methods to Address Data Gaps

To fill these data gaps, the PWS considered the several methods as suggested by U.S. Environmental Protection Agency (EPA) and MassDEP guidance^{5,6}.

- **Customer Self Identification:** This method to identify the “private” side of service lines can be continued based on procedures outlined in **Section 4**. The PWS should provide customers with at least two opportunities to complete the survey and request additional help with identifying “private” service line materials.
- **Field Inspection by PWS:** Field inspection by the PWS is considered the most accurate verification method that utilizes physical and visual inspection of the service line by a trained staff member⁷. For “private” service lines, this involves PWS inspection of the service line material from inside of the building. For “public” service lines, this includes excavation of the public service line. The two approaches to excavation include mechanical excavation and vacuum excavation. Mechanical excavation includes using a backhoe to dig a test pit exposing the service line. Vacuum excavation includes using a vacuum truck with a water jet or compressed air to loosen the soil, then vacuuming the soil, resulting in a small hole to assess the service line. Excavation may include removing portions of the road, sidewalk, or other obstacles.
- **Other Methods:** The PWS should also continue to identify and track service line materials in the inventory as they are encountered during normal operations (e.g., checking service line materials when reading water meters or performing maintenance activities).

6.2.2 Procedure to Address Data Gaps

Considering available resources, the PWS determined that **Customer Self Identification and Field Inspection by PWS** would be the most applicable methods to fill remaining data gaps as summarized below. Pending the required staff and funding, the PWS should do their best due diligence to identify all unknown service line materials. An offer for the PWS to perform an inspection to confirm service line materials should also be provided in the customer notifications for lead status unknown service lines (see **Section 6.5.1**). Customer refusals should be documented as outlined in **Section 6.5.2**. If the PWS 90th percentile lead sampling result exceeds the lead trigger level, and therefore the PWS is required to complete LSL replacements, the PWS should commence data gap investigations if not already on-going to identify lines requiring replacement.

In addition to addressing data gaps, it is recommended that the PWS conducts **Field Inspection by PWS** for the 25 “private” galvanized service lines that were identified in **Table 5-2**. The goal of these investigations will be to verify the reported materials of the “private” lines and therefore,

⁵ Environmental Protection Agency (EPA) Office of Water. *Guidance for Developing and Maintaining a Service Line Inventory, Chapter 5: Service Line Investigation Methods*. EPA 816-B-22-001. August 2022. Available at: https://www.epa.gov/system/files/documents/2022-08/Inventory%20Guidance_August%202022_508%20compliant.pdf.

⁶ MassDEP. *MA Materials Inventory Template_v1*. Available at: <https://www.mass.gov/lists/lead-copper-forms-and-templates>

⁷ MassDEP. *MA Materials Inventory Template_v1*. Available at: <https://www.mass.gov/lists/lead-copper-forms-and-templates>

confirming the need for replacement of those lines and assuring that the customers are receiving accurate outreach materials. These investigations should occur from inside the building to minimize any potential disturbance to the line. The PWS should attempt to contact the private owners of these lines to schedule investigations as soon as possible.

Important: It is likely that the updated LCRI (expected to be finalized October 2024) will include the requirement for systems to identify all unknown service line materials, regardless of the system's sampling results, and therefore, it is **highly recommended** that data gap analysis be initiated as soon as possible by the PWS.

The following procedure can be used to address the remaining data gaps:

- To address the remaining “private” side data gaps, the PWS should provide customers with at least one additional opportunity to complete the survey and request additional help with identifying “private” service line materials (i.e., Customer Self Identification). If help is requested, the PWS should contact the customer as soon as possible to provide assistance.
- A decision matrix was created to prioritize field investigations (i.e., Field Inspection by PWS) based on “sensitive” populations and the likelihood of the service line being lead based on known information (i.e., water main material, building age, and service line materials) (**Table 6-1**).
- The decision matrix was then applied to the inventory data to create a prioritized list of field investigation locations from the inventory (see **Appendix A** for individual account scores). Known schools, daycare centers, senior centers, and nursing homes were automatically added to the list. Note: the Housatonic Water Works Company serves 1 school (5 and 6 Ramsdell Road, Great Barrington), 1 special needs facility (249 North Plain Road, Great Barrington), no licensed child care centers, no nursing homes, and no senior centers.
- The PWS should perform field investigations on the unknown, but may contain lead (UNK-LG) “public” and/ or “private” portions of the service line as applicable. As noted above, investigations for the “private” side will involve inspection from inside the building and investigations for the “public” side will involve excavation.
- Once investigations of known schools, daycare centers, senior centers, and nursing homes with unknown, but may contain lead (UNK-LG) materials are completed, the PWS should prioritize data gap investigations by street. The individual prioritization scores for each account with a data gap were averaged by street to create a list of Priority Streets where the streets with the highest scores should be investigated first (see **Appendix A** for the list of Priority Streets).
- Customers should be properly notified of any potential disturbance to their water service due to excavation or the need for the PWS to enter the building prior to potential investigations (see **Appendix C** for more information on the available DEP template notifications).

Table 6-1. Prioritization Matrix for Data Gap Investigations

Factor	Weight	Rationale	Scores		
Likelihood of Service Line Being Lead (<i>Higher score is a higher likelihood</i>)					
Water Main Material	10%	The likelihood of a private side lead line can be assessed based on the material of the water main, reflecting correlations in material use across public and private segments. Water mains made of cast iron are assigned the highest likelihood score, as cast iron pipes were frequently used in conjunction with lead service lines during periods when lead plumbing was common. Mains with unknown material receive the next highest likelihood score, as the uncertainty often points to older infrastructure where lead use was prevalent. Water mains made of more modern materials such as plastic, asbestos cement (AC), and ductile iron (DI) are assigned the lowest likelihood score as these materials are indicative of newer installations where lead use was significantly reduced or eliminated.	<i>Other (AC, DI, Plastic)</i>	<i>Unknown</i>	<i>CI</i>
			1	2	3
Building Age	20%	The likelihood of water service lines containing lead can be classified based on building age, reflecting historical plumbing practices and regulations. Buildings with unknown age are assigned the highest likelihood score of 3, as unknown age may indicate insufficient records, often correlated with older infrastructure where lead use was prevalent. Buildings constructed before 1955 are assigned the likelihood score of 2, as lead pipes were commonly used during this period. Structures built between 1955 and 1985 receive a likelihood score of 1, as lead pipe use declined due to increased awareness of health risks. Buildings constructed after 1985 are assigned a likelihood score of 0, indicating the least likelihood of containing lead, due to stringent regulations like the Safe Drinking Water Act amendments that reduced lead use in plumbing materials.	<i>1955-1986</i>	<i><1955</i>	<i>Unknown</i>
			1	2	3
Public Side Material	10%	The likelihood of private side lead line can be assessed based on the classification of the public side material. If the public side is made of lead or its material is unknown (but may contain lead), there is a heightened likelihood that the private side may also be made of lead. This is because, historically, the same materials were often used for both segments of the service line. During the period when lead was commonly used, it was practical and economical to use the same material throughout the entire service line. As a result, a lead private side strongly suggests a lead public side. Also, unknown material on the public side may indicate insufficient records, often correlated with older infrastructure where lead use was prevalent. This uncertainty further increases the risk of lead presence on the private side.	<i>Other (Copper, Plastic, Unknown but definitely does not contain lead, etc.)</i>	<i>Unknown (may contain lead)/ Galvanized</i>	<i>Lead</i>
			1	2	3
Private Side Material	10%	The likelihood of public side lead line can be assessed based on the classification of the private side material. If the private side is made of lead or its material is unknown (but may contain lead), there is a heightened likelihood that the public side may also be made of lead. This is because, historically, the same materials were often used for both segments of the service line. During the period when lead was commonly used, it was practical and economical to use the same material throughout the entire service line. As a result, a lead private side strongly suggests a lead public side. Also, unknown material on the private side may indicate insufficient records, often correlated with older infrastructure where lead use was prevalent. This uncertainty further increases the risk of lead presence on the public side.	<i>Other (Copper, Plastic, Unknown but definitely does not contain lead, etc.)</i>	<i>Unknown (may contain lead)/ Galvanized</i>	<i>Lead</i>
			1	2	3
Consequence of Service Line Being Lead (<i>Higher score is a higher potential consequence</i>)					
Environmental Justice Communities	25%	The consequence of a lead service line can be significantly influenced by the ability of the population to cope with the impacts of lead exposure. Environmental Justice (EJ) Communities may be disproportionately exposed to lead from all sources and face additional disparities that may make it more difficult to prevent or address the impacts of lead exposure. Scores are assigned based on the 2020 EJ Block Groups ² . Areas with the Block Group of "Minority, Income, and English Isolation" are assigned the highest consequence score due to the greater potential health impact on more disparaged areas. Areas with the Block Group of "Minority and English Isolation" OR "Minority and Income" OR "Income and English Isolation" receive an intermediate consequence score, reflecting a lower but still notable risk. Areas with the Block Group of "Minority", "Income", OR "Language Isolation" only are assigned the lowest consequence score, as the potential impact is diminished. If the account is not within an EJ Community, this score is left blank (i.e., 0).	<i>Minority, Income, and English Isolation</i>	<i>Minority and Income OR Minority and English Isolation OR Income and English Isolation</i>	<i>Minority OR Income OR Language Isolation</i>
			3	2	1
Multi-Family	25%	The consequence of lead service lines can also be assessed based on the type of residential occupancy, with varying levels of impact. Non-residential properties are assigned the lowest consequence score, as they typically have less frequent and shorter duration water use compared to residential properties, reducing the risk of prolonged lead exposure. Single-family residences receive an intermediate consequence score, as these homes generally house fewer individuals, but the consistent use of water for drinking, cooking, and bathing poses a moderate risk. Multi-family residences are assigned the highest consequence score due to the higher number of occupants, including potentially vulnerable populations such as children and the elderly, increasing the likelihood of significant health impacts from lead exposure.	<i>Multi-Family</i>	<i>Single Family</i>	<i>Other</i>
			3	2	1
Sum of Weights:	100%				

Table Notes:

- Schools, daycares, senior centers, and nursing homes with unknown service line materials were automatically assigned the highest priority (i.e., 4 points) for investigations to focus efforts on accounts serving children and the elderly where lead contamination has the most adverse health impacts (i.e., "Sensitive Populations").
- A map of MA 2020 Environmental Justice Communities by Block Group is available online at: <https://mass-eoeaa.maps.arcgis.com/apps/webappviewer/index.html?id=1d6f63e7762a48e5930de84ed4849212>.
- Example Calculation:** Determine the score for a service line with CI water main material, unknown building age, unknown may contain lead public material, lead private side material, "Minority, Income, and English Isolation" EJ Block Group, and multi-family residence.
Solution: Service line priority score = (3*0.10)+(3*0.20)+(2*0.10)+(3*0.10)+(3*0.25)+(3*0.25) = 2.9 points (high priority)

6.3 Prioritized Replacement Strategy and Goal Rate

The following sections outline the recommended LSL replacement prioritization strategy and goal rate for the PWS.

6.3.1 Prioritization of Lead Service Line Replacements

As the PWS does not own either portion of the service line, and **therefore is not responsible for the cost of replacements**, the lead service line replacement program should first involve reaching out to the applicable customers encouraging replacement and informing them of the potential risks associated with lead in drinking water. The PWS should offer to schedule replacements with their contractor, or request that customers who want to privately schedule replacements inform the PWS prior to the replacement work to allow the PWS to oversee and properly document all replacements. Customer outreach should be performed as outlined in **Section 6.5**. More service lines requiring replacement may be identified once all data gaps are addressed and should be included in the applicable outreach.

For all customers who have approved the replacements, or if the PWS receives State funding for LSL replacement, the LSL replacement prioritization strategy should be based on the targeting of lead or GRR that has been identified in areas with “sensitive” populations. “Sensitive” populations for this PWS include known schools, Environmental Justice communities, and multi-family homes. Refer to **Appendix A** for accounts identified as serving “sensitive” populations. By focusing replacement efforts on these areas first, it is addressing areas where lead contamination has the most adverse impacts on the health of those who drink the water. The prioritized areas are as follows:

Table 6-2. Prioritization of "Sensitive" Populations

Prioritized Area	Ranking
Schools/ licensed childcare centers	1
Environmental Justice communities ¹	2
Multi-family homes	3

Table Notes:

1. The Housatonic Water Works Company serves an Environmental Justice Community (Income) in northern Great Barrington, MA.

For all lines identified as requiring replacement, replacement should be prioritized based on **Table 6-2**. Replacement of service lines that do not serve “sensitive” populations should be based on the age of the building served (i.e., oldest first).

6.3.2 Emergency Replacement

In the event where an emergency service line replacement is necessary, the PWS should replace the lead service line as part of the emergency repair (at the cost of the owner) if materials, staff resources, and procedures are in place at the time. If replacement must be scheduled for a later date, the lead service line materials should be documented. Customer notification procedures for replacement work as outlined in **Section 6.5** should also be followed in the event of an emergency replacement.

6.3.3 Ownership

The PWS owns the water main, but the entire service line, from the water main to the water meter, is privately owned by the customer. The PWS does not have an ordinance to mandate the replacement of all lead service lines regardless of ownership, nor is there a plan to create such an ordinance.

If funds become available for the PWS to fund lead service line replacements, the PWS may choose to:

- Create an ordinance to mandate the replacement of all lead service lines, regardless of ownership;
- Require a signed and executed contract between the water system, contractor, and the private property owner prior to replacement of the private service line; or
- Have customers apply for replacement through an online form on the PWS website.

6.3.4 Recommended Replacement Goal Rate

Under the LCRR, systems serving more than 10,000 persons that exceed the lead trigger level of 10 ppb (but are at or below the lead action level of 15 ppb) based on the 90th percentile sample result of the LCR sampling sites are required to conduct goal-based full LSL replacement (at a rate approved by the State) until either the system meets its replacement goal or tap sampling shows that the system no longer exceeds the lead trigger level for two consecutive monitoring periods. Replacement must recommence if the 90th percentile lead level anytime thereafter exceeds the lead trigger level (but is at or below the lead action level).

Systems serving more than 10,000 persons that exceed the lead action level of 15 ppb based on the 90th percentile sample result of the LCR sampling sites are required to conduct full LSL replacement at an average annual rate of at least 3%, calculated on a two-year rolling basis, until either the system meets its replacement goal as outlined in 40 CFR 141.84(g)(6) or the system has no remaining lead status unknown service lines and obtains refusals to conduct full LSL replacement or non-responses from every remaining customer in its distribution system served by a LSL or GRR service line.⁸

MassDEP encourages all systems, including those serving less than 10,000 in population, to establish a planned replacement rate. Though the system serves less than 10,000 persons and is not required to have a recommended replacement goal rate in the event lead levels exceed the lead trigger or action level, the PWS should plan to have a recommended replacement goal rate of 3%.⁹

6.4 LSL Replacement Procedures

6.4.1 LSL Replacement Procedures

The PWS does not plan to replace the privately-owned LSLs unless approved and paid for by the customer or the PWS receives State funding which would require full LSL replacement. However, the PWS should offer to schedule replacements with their contractor (at the cost of the owner) and request that owners inform the PWS of privately-scheduled replacements, to allow the PWS to oversee and

⁸ EPA. 40 CFR 141.84(f) and 141.84(g). Available at: <https://www.ecfr.gov/current/title-40/chapter-I/subchapter-D/part-141/subpart-I/section-141.84>

⁹ The PWS notes that the EPA LCRI proposes to require systems to replace all lead and GRR service lines that are “under the control” of the water system in 10 years or less, regardless of the system’s 90th percentile lead level. <https://www.epa.gov/ground-water-and-drinking-water/proposed-lead-and-copper-rule-improvements#Support>

properly document all replacements. Service line replacement will involve either trenchless or open excavation work, depending on the location and condition of piping. It is estimated that replacement for most service lines will take one to two days to complete. Work may require an interruption of customer water supply for about four hours¹⁰, and they should be notified shortly before it happens to plan accordingly. Final regrading and dressing of lawn may require a return visit. Replacement approaches may involve:

- Open trench: Excavation of soil from the point of connection to the water main along the entire length of the pipe to be replaced.
- Replacement on new routes (trenchless): The discarded pipe is left in the ground and a new pipe is installed along a different route using a trenchless method such as impact moling or guided boring. Excavation of at least two access pits will be required- one at the point of connection at the water main, one at the curb step, and potentially one at the building or at the water meter.
- Replacement using existing routes (pipe pulling, pipe splitting): The existing pipe is removed or displaced while simultaneously replacing it with a new pipe. This may be done through pipe pulling, which removes the existing pipe, or pipe splitting, which leaves the existing pipe in the ground but allows the new pipe to be installed along the original route. Once the access pit is dug and the lead service is disconnected from interior plumbing, a cable with a mechanical device attached to the end are fed through the existing pipe and the cable is pulled through from the other access pit with a backhoe or winch. The mechanical device serves as an anchor and the lead pipe is removed when the cable is pulled. Replacement piping is also attached to the mechanical device and is simultaneously pulled into the existing route.¹¹

Immediately after lead service line replacement, the PWS should flush the water from an outside connection (e.g., hose leading from the house side of the meter installation) to remove any particles in the service line and near the point-of-entry. Where possible and practical, the PWS should flush the connections prior to meter connection using a straight pipe in place of the meter. This will allow for a high velocity flush and protect the meter from potential damage from lead and other construction-related fragments. The pipes should be flushed at full velocity for at least ten minutes.

Before the service line is returned to service, the PWS should provide the customer with filters and properly notify the customer of the need to flush the line from the customer side as well (see **Section 6.7** for more information on filters and customer flushing).¹² The PWS should also offer to take a follow up sample at the discretion of the customer three to six months after replacement of the lead service line in accordance with recommended MassDEP sampling procedures. The results of the sample analysis should be reported by the PWS to the owner and resident(s) served by the lead service line within three business days of receiving the results from the laboratory. Post-replacement notifications should follow the templates provided on the MassDEP website¹³ (see **Appendix C** for more information on template notifications). All replacement work should be tracked using the LSL Replacement Program Tracking Form in **Appendix B**.

¹⁰ MassDEP. *MA Materials Inventory Template_v1*. Available at: <https://www.mass.gov/lists/lead-copper-forms-and-templates>

¹¹ Lead Service Line Replacement Collaborative. *Understanding Replacement Techniques*. Available at: <https://www.lslr-collaborative.org/understanding-replacement-techniques.html>.

¹² Virginia Board of Health. *Lead Service Line Replacement Plan Template v_1.0*. May 2023. Available at: <https://www.vdh.virginia.gov/content/uploads/sites/14/2023/05/ODW-LSL-replacement-plan-template-v1.0.docx>

¹³ MassDEP. *Lead & Copper Forms and Templates: Lead Service Line Replacement Program*. Available at: <https://www.mass.gov/lists/lead-copper-forms-and-templates>

6.4.2 Partial Lead Service Line Replacement

The PWS should make a good faith effort to avoid partial replacement of lead service lines and notes that partial replacements do not count toward mandatory rate or goal-based rate LSL replacement. At least two customer notifications encouraging full replacement should be sent (see **Section 6.5.1** for more information on template notifications).

After completion of any **partially-replaced** lead service line (unless the PWS is notified of a partial replacement which has occurred more than six months in the past), the PWS should follow the procedures outlined in **Section 6.4.1** before the service line is returned to service (i.e., provide customers with filters, flushing instructions, and an offer to take a sample within three to six months after replacement). In addition, the PWS should inform consumers that they may experience a temporary increase of lead levels in their drinking water due to the partial replacement, information about the health effects of lead, and actions consumers may take to minimize their exposure to lead in drinking water (see **Appendix C** for more information on available DEP template notifications).

6.4.3 Replacement of Lead Goosenecks

In addition to replacement of lead service lines, the PWS should replace any PWS-owned lead gooseneck, pigtail, or connector¹⁴ when encountered during planned or unplanned water system infrastructure work. Upon replacement of any gooseneck that is attached to a lead service line, proper risk mitigation procedures should be followed (i.e., the customer served by the affected service line should be notified as described in **Section 6.5**).

6.4.4 Disposal of Lead Service Lines

To make sure all lead service lines are removed and disposed of properly, the PWS should make a good faith effort to ensure that the contractors remove them to an appropriate facility/ scrapyards for disposal and/ or keep records of the sale ticket and receipts on file.

6.5 Customer Communication Procedures

6.5.1 Communication, Lead Education, Transparency Strategy, and Plan

Per EPA, PWSs are expected to provide notification to persons served by the water system at the service connections with a LSL, galvanized line requiring replacement (GRR), or lead status unknown service line within **30 days** after completing the initial LSL inventory and repeated annually until only non-lead lines remain within the system. For new customers, PWS should also provide this notice at the time of the service initiation. Notifications should follow the MassDEP templates provided on their website¹⁵. **Appendix C** includes more information on the available DEP template customer notification letters. In following these guidelines, the PWS should plan to complete the below notification procedures:

¹⁴ As required by 40 CFR 141.84(c), the PWS should offer to replace any customer-owned lead gooseneck, pigtail, or connector; however, the PWS is not required to bear the cost of replacement of the customer-owned parts and the customer can reject the replacement offer.

¹⁵ MassDEP. *Lead & Copper Forms and Templates: Lead Service Line Replacement Program*. Available at: <https://www.mass.gov/lists/lead-copper-forms-and-templates>

- **Initial Notification:** Within 30 days of this report, the PWS should provide the first notice as a household specific written notification via mail. For new customers, the PWS should provide this notice at the time of service initiation.
- **Annual Notification:** Annual notifications of lead, GRR, and lead status unknown service lines should be provided each of the following years to customers as a household specific written notification via mail.
- **Newly Identified LSLs:** Properties with newly identified lead, GRR, or lead status unknown service lines should receive a mailed letter informing them within 30 days of identification.
- **Replacement Notifications:** For any PWS-involved replacements, replacement notifications should be sent to applicable customers via mail at least 45 days before each replacement and within 1 day of replacement completion (including replacement of lead goosenecks unless the rest of the service line can be categorized as non-lead). If a line is partially replaced, notification of sampling results should be provided as outlined in **Section 6.4**. Notifications for pre- and post-replacement work should follow the templates provided on the MassDEP website¹⁶ (see **Appendix C** for more information on the available DEP template notifications).

The PWS should keep customers informed about LSL replacements and the importance of removing lead plumbing materials as described above and evaluate the success of the program on a quarterly basis through tracking the number of LSLs removed. Communication methods should be adjusted as needed.

Additional LCRR public education requirements outside of the required LSL replacement communications described in this Report are outlined in 40 CFR 141.85¹⁷ (e.g., public notification requirements for exceedance of the lead action level, notifications due to disturbance to a known or potential service line containing lead not due to partial or full replacement). Additional public communication templates are also available on the MassDEP website¹⁸.

6.5.2 Customer Refusal

In the event of a property owner/ customer's refusal to allow the PWS to investigate service line materials or replace the service line, the PWS should document it with the signed and dated LSL Replacement Program Investigation Consent Form/ LSL Replacement Program Replacement Consent Form (see **Appendix C**) as well as documenting any customer refusals received via email or phone call to the PWS. The PWS may continue outreach and education efforts involving the local Board of Health and MassDEP.

6.5.3 Lead Service Line Inventory Results

The LCRR requires the PWS to make the inventory publicly accessible, including a location identifier for each LSL and galvanized line requiring replacement. The PWS should make the initial LSL inventory results available as a PDF table on the PWS website and/ or paper copies available at the Town Hall or Water Department. See **Appendix D** for the Publicly Accessible LSL Inventory.

¹⁶ MassDEP. *Lead & Copper Forms and Templates: Lead Service Line Replacement Program*. Available at: <https://www.mass.gov/lists/lead-copper-forms-and-templates>

¹⁷ EPA. 40 CFR 141.85. Available at: <https://www.ecfr.gov/current/title-40/chapter-I/subchapter-D/part-141/subpart-I/section-141.85>

¹⁸ MassDEP. *Lead & Copper Forms and Templates: Lead Service Line Replacement Program*. Available at: <https://www.mass.gov/lists/lead-copper-forms-and-templates>

6.6 Funding Strategy

6.6.1 Financing

The property owner will be responsible for the costs associated with replacing the entire lead or GRR line of their property. To help incentivize service line replacement and accommodate residential customers that are unable to pay for replacement, the PWS may consider offering low-cost replacement by employing in-house labor and materials, along with a convenient payment plan.

If results from the **Section 6.2** Data Gap Analysis identify a large amount of service lines requiring replacement, the PWS may apply for financing through the Clean Water Trust's State Revolving Fund (SRF) and/ or Drinking Water State Revolving Fund (DWSRF). These funding mechanisms require full LSL replacement (not just a portion). Therefore, if the PWS receives State funds, the property owner will not be responsible for the costs associated with replacing the lead line of their property. However, the PWS may consider recovering funds for full LSL replacements through ratepayer revenue.

6.7 Flushing Procedures and Filters

6.7.1 Filters

After PWS-involved full or partial replacement of a lead service line (including replacement of lead goosenecks unless the rest of the service line can be categorized as non-lead), the PWS should provide the affected customer(s) with a pitcher filter or point-of-use device certified by an American National Standards Institute (ANSI) accredited certifier to reduce lead, six months of replacement cartridges, and instructions for use before the affected service line is returned to service. Filter instructions for customers should follow the template provided on the MassDEP website¹⁹ (see **Appendix C** for more information on the available DEP template notifications).

6.7.2 Flushing

After full or partial replacement of a lead service line (including replacement of lead goosenecks unless the rest of the service line can be categorized as non-lead), the PWS should provide the affected customer(s) with public education materials that include instructions for customers to flush service lines and premise plumbing of particulate lead before the affected service line is returned to service. Instructions for flushing can be found in the template post-replacement notifications as outlined in **Appendix C**.

6.8 Replacement Plan Summary

Table 6-3 below provides a summary of the PWS LSLRP including a schedule, required deliverables, and reporting requirements in accordance with the 2021 LCRR. Refer back to **Figure 6-1**, **Figure 6-2**, and **Figure 6-3** for additional clarity on action triggers and required deliverables based on the materials contained in the inventory, LCR sampling results, and ownership of service lines. The recommended short-term action plan for this PWS is as follows:

- Within 30 days of this report submittal, begin annual customer notifications for the 25 GRR and all unknown service lines.

¹⁹ MassDEP. *Lead & Copper Forms and Templates: Lead Service Line Replacement Program*. Available at: <https://www.mass.gov/lists/lead-copper-forms-and-templates>

- Contact the customers of the 25 “private” galvanized service lines that were identified in **Table 5-2** to schedule **Field Inspection by PWS** (i.e., inspection inside the building) to confirm the need for replacement of those lines and assure that the customers are receiving accurate outreach materials.
- Continue identifying and recording service line materials in the inventory through ongoing PWS infrastructure work. Replace lead goosenecks when encountered.
- Make the LSL inventory publicly accessible in some fashion until further notice (e.g., available by in-person review in water system office, post in a location accessible for public viewing at PWS office, post online on the PWS website, etc.). Include instructions on how consumers can access the LSL inventory in the Consumer Confidence Report.
- Begin addressing data gaps with a goal deadline of October 16, 2027.
- Continue monitoring for lead and copper at the DEP-approved LCR sites as required by DEP and EPA.

Important: As previously noted, this plan may be updated pending the publication of EPA’s LCRI, anticipated in October 2024. Major changes to the replacement plan to meet LCRI requirements should be completed by the LCRI compliance date (i.e., currently proposed to be three years after the final rule is published) and may include, but are not limited to, the following²⁰:

- Full replacement of all lead and GRR service lines that are “under the control” of the water system in 10 years or less, regardless of the system’s 90th percentile lead level.
- An improved LSL inventory which identifies all materials of unknown service lines by the replacement deadline (i.e., 10 years after LCRI compliance date), regardless of the system’s 90th percentile lead level.
- Additional LSLRP elements: (1) Identification of any State and local laws and water tariff agreements relevant to the water system’s ability to gain access to conduct full service line replacement; (2) A communication strategy to inform both consumers and owners of rental properties about the replacement program.
- Reduced threshold for Small System Flexibility for Community Water Systems to those serving 3,300 or fewer people.
- Updated public education content and delivery frequencies.

²⁰ EPA. Proposed Lead and Copper Rule Improvements. Available at: <https://www.epa.gov/ground-water-and-drinking-water/proposed-lead-and-copper-rule-improvements#Support>

Table 6-3. Summary of LSL Replacement Plan

Task	Subtask	Action Trigger	Deadline	Deliverables	Reporting
LSL Inventory (Appendix A, Section 6)	Initial Inventory	All PWS	October 16, 2024	Initial LSL inventory spreadsheet	Submitted to MassDEP and made publicly accessible
	Updated Inventory	Inventory includes lead status unknown service lines	Annually, within 30 days of the end of each tap sampling monitoring period until the inventory has no lead, GRR, or lead status unknown service lines	Updated LSL inventory spreadsheet	Submitted to MassDEP annually
	LSL Replacement Plan	Initial inventory includes lead, GRR, or lead status unknown service lines	October 16, 2024	LSL Replacement Plan	Submitted to MassDEP
Address Data Gaps (Section 6.2)	Data Gap Investigations	Inventory includes lead status unknown service lines	Recommended goal completion by: October 16, 2027	1. Updated LSL inventory spreadsheet 2. Customer Notifications (see Appendix C)	1. Submitted to MassDEP annually 2. Mailed to affected customers
	Ongoing PWS Infrastructure Work	Ongoing	N/A	LSL inventory spreadsheet should be updated as service line materials are discovered through regularly scheduled operation and maintenance activities	Submitted to MassDEP annually
Lead Service Line Replacement (Sections 6.3 and 6.4)	Full LSL Replacement	The first required year of LSL replacement begins when the PWS 90 th percentile lead level exceeds the lead trigger level in any monitoring period. ^{1,2}	Replacement plan schedule not to exceed 15 years from the date of the initial exceedance of the lead trigger/ action level. For exceedance of the lead trigger level (10 ppb): Replacement can cease when 90 th percentile lead level during 2 consecutive 1-year monitoring periods is at or below the lead trigger level or the PWS has met its replacement goal. Replacement must recommence when 90 th percentile thereafter exceeds the lead trigger level. For exceedance of the lead action level (15 ppb): Replacement can cease when the PWS has met the replacement goal pursuant to 40 CFR 141.84(g)(6) or the PWS has no remaining service lines requiring replacement. Replacement must recommence when the 90 th percentile thereafter exceeds the lead action level.	1. LSL Replacement Notifications (see below) 2. LSL Replacement Summary Table 3. Filters and replacement cartridges 4. Sample and lab results 5. Updated LSL inventory spreadsheet	1. Mailed to affected customers 2. N/A- for PWS records 3. Given to affected customers 4. Lab results shared with customer 5. Submitted to MassDEP annually
	Partial LSL Replacement	Same triggers as full LSL replacement (above) <u>AND</u> customer refusal to replace all portions of LSL	See Full LSL Replacement above.	1. LSL Replacement Notifications (see below) and Lead Public Education 2. LSL Replacement Summary Table 3. Filters and replacement cartridges 4. Sample and lab results 5. Updated LSL inventory spreadsheet	1. Mailed to affected customers 2. N/A- for PWS records 3. Given to affected customers 4. Lab results shared with customer 5. Submitted to MassDEP annually
	Lead Gooseneck Replacement	When encountered during planned or unplanned PWS infrastructure work	N/A	If disturbing an attached LSL: 1. LSL Replacement Notifications (see below) 2. LSL Replacement Summary Table 3. Filters and replacement cartridges 4. Updated LSL inventory spreadsheet	1. Mailed to affected customers 2. N/A- for PWS records 3. Given to affected customers 4. Submitted to MassDEP annually
Customer Notifications (Section 6.5)	Lead, GRR, or Lead Status Unknown Notification	Inventory includes lead, GRR, or lead status unknown service lines	Within 30 days after submitting the initial LSL inventory (latest by November 15, 2024), repeated annually until null	Notice Letter (Initial, Annual, Newly Identified LSLs)	All mailed to affected customers.
	LSL Replacement Notifications	LSL Replacement Plan was triggered (see above)	Pre-replacement: Within 45 days Post-replacement: Within 1 day	1. Notice Letter (First, Second, Final) 2. Offer for follow-up sample 3. Flushing procedure 4. Filter instructions	All mailed to affected customers

Table Notes:

- The PWS should plan to follow the tap sampling monitoring requirements as outlined in 40 CFR 141 Subpart 1.
- As this PWS serves fewer than 10,000 people, it may choose to implement the Small Water System Compliance Flexibility options of 40 CFR 141.93. Therefore, in the event of a lead action level exceedance, the PWS may choose to (1) begin the lead service line replacement plan on a schedule not to exceed 15 years, (2) install and maintain optimal corrosion control treatment (or re-optimize corrosion control treatment), (3) install, maintain, and monitor point-of-use devices in each building, or (4) replace lead-bearing plumbing.
- This plan summary is based on the current requirements of EPA's 2021 LCRR.

**Appendix A (ELECTRONIC):
Lead Service Line Inventory**

Appendix B:
Lead Service Line Replacement Program Tracking Form

Appendix C:
Customer Communications

Appendix C: Customer Communications

MassDEP has created templates for LSL customer communications for PWS use. The templates are listed in this Appendix with reference to applicable report section(s) for more information.

The templates are available for download at the following website:
<https://www.mass.gov/lists/lead-copper-forms-and-templates>

Note from DEP on Consumer Notifications: The EPA is currently in the process of finalizing the Lead and Copper Rule Improvements (LCRI) and may publish it in the Federal Register prior to October 16, 2024. The LCRI as currently drafted, will continue to require annual consumer notifications with health effects language, but may include requirements that differ from the LCRR consumer notification requirements. MassDEP is closely following these regulatory changes and will provide updated templates and guidance as needed in the future.

Consumer LSL/ GRR/ UNK-LG Notification Letters

Section 6.5.1. Initial Notification, Annual Notification, and Newly Identified LSLs

Important: The PWS should deliver these notifications to each customer (both the owner and resident/occupant if they are not the same person; posted in a publicly accessible place for multi-unit structures) served by these three types of service lines. The initial notifications must be delivered by **November 15, 2024**, or upon initiation of every new customer added to the PWS distribution system following this date. **Refer to the templates for detailed instructions.**

- “LCRR Consumer Notification Template – Confirmed Lead Service Line”
- “LCRR Consumer Notification Template – Confirmed Galvanized Requiring Replacement Service Line (GRR)”
- “LCRR Consumer Notification Template – Unknown Service Line”
 - Note: This notification template includes an offer for the PWS to perform an inspection to confirm the service line materials as noted in **Section 6.2.2.**

Pre-Replacement Work Notices

Note: Attachments to these template notices include forms to document customer refusals as outlined in **Section 6.5.2.**

Section 6.2.2. Data Gap Investigation Notification

- “LSLR Program Notice Template- Unknown Identification”
 - Attachment: “LSLR Program Investigation Consent Form”
 - Attachment (if investigation will cause disturbance to the potentially lead service line, such as excavation): “Template Brochure: Lead Public Education.” Note: This template will need to be modified to indicate what the PWS is doing to identify the service line materials and that customers may experience a temporary increase of lead levels in their drinking water due to potential disturbance to the line.

Section 6.5.1. Pre-Replacement Notifications

The PWS should deliver pre-replacement notifications to each affected consumer and owner as a First Notice (at least 45 days before replacement unless not feasible due to an emergency replacement), Second Notice, and Final Notice. This provides customers with at least two opportunities to indicate interest in replacing the service line as outlined in **Section 6.4.2**.

- “LSLR Program Notice Template- LSL or GRR Replacement”
 - Attachment: “LSLR Program Replacement Consent Form”

Post-Replacement Work Notices

The PWS should deliver post-replacement notifications to each affected consumer and owner within one day of replacement completion.

Section 6.4.1. – 6.4.2. Post-Replacement Follow-Up Sample Notifications

- “PWS Offer to Sample Letter Template- 3-6 Months Following a Service Line Replacement”
- “Consumer Tap Sampling Collection Letter Template”
 - Attachment: “Chain of Custody (COC) for Lead Sampling After Service Line Replacement”

Section 6.5.1. Post-Replacement Notifications

Note: Post-Replacement Notifications include instructions for flushing as outlined in **Section 6.7.2**.

- “Procedures Following a Partial LSL Replacement Notice Template”
 - Note: This template may also be modified for notification of the replacement of lead goosenecks (unless the rest of the service line can be categorized as non-lead).
 - Attachment: “Template Brochure: Lead Public Education.” Note: This template will need to be modified to indicate that a partial replacement has occurred and therefore customers may experience a temporary increase of lead levels in their drinking water.
- “Procedures Following a Full LSL Replacement Notice Template”
 - Attachment: “Template Brochure: Lead Public Education.” Note: This template will need to be modified to indicate that a full replacement has occurred and therefore customers may experience a temporary increase of lead levels in their drinking water.

Section 6.7.1. Filter Instructions

- “Filter Cartridge and Pitcher Notification Template”

Appendix D:
Publicly Accessible Lead Service Line Inventory

Housatonic Water Works Company Lead Service Line Inventory

Inventory Notes:

The **Locational Identifier** is a combination of a unique Site ID and the account street address. There may be multiple services going to a street address.

For additional help identifying service line materials, please contact the Housatonic Water Works Company.

The **Public Side** is defined as the service line pipe material from the water main to curb stop.

The **Private Side** is defined as the service line pipe material from the curb stop to the water meter.

UNK-LG = Unknown material, may contain lead

UNK-NOLG = Unknown material, definitely does not contain lead

LOCATIONAL IDENTIFIER	PUBLIC SERVICE LINE MATERIAL	PRIVATE SERVICE LINE MATERIAL	ENTIRE SERVICE LINE CLASSIFICATION
1 APPLE STREET, STOCKBRIDGE	UNK-LG	UNK-LG	LEAD STATUS UNKNOWN
2 APPLE STREET, STOCKBRIDGE	UNK-LG	UNK-LG	LEAD STATUS UNKNOWN
3 APPLE STREET, STOCKBRIDGE	UNK-LG	UNK-LG	LEAD STATUS UNKNOWN
5 APPLE STREET, STOCKBRIDGE	UNK-LG	UNK-LG	LEAD STATUS UNKNOWN
6 BEACON HILL, GREAT BARRINGTON	UNK-LG	UNK-LG	LEAD STATUS UNKNOWN
10 BEACON HILL, GREAT BARRINGTON	UNK-LG	UNK-LG	LEAD STATUS UNKNOWN
12 BEACON HILL, GREAT BARRINGTON	UNK-LG	UNK-LG	LEAD STATUS UNKNOWN
1 BERNARD GIBBONS WAY, UNIT 1, APT 1, GREAT BARRINGTON	UNK-LG	Copper	LEAD STATUS UNKNOWN
2 BERNARD GIBBONS WAY, GREAT BARRINGTON	UNK-LG	UNK-NOLG	LEAD STATUS UNKNOWN
2 BERNARD GIBBONS WAY, GREAT BARRINGTON	UNK-LG	UNK-NOLG	LEAD STATUS UNKNOWN
2 BERNARD GIBBONS WAY, GREAT BARRINGTON	UNK-LG	UNK-NOLG	LEAD STATUS UNKNOWN
BERNARD GIBBONS WAY, GREAT BARRINGTON	UNK-LG	Copper	LEAD STATUS UNKNOWN
BERNARD GIBBONS WAY, UNIT 10, GREAT BARRINGTON	UNK-LG	Copper	LEAD STATUS UNKNOWN
BERNARD GIBBONS WAY, UNIT 11, GREAT BARRINGTON	UNK-LG	Copper	LEAD STATUS UNKNOWN
BERNARD GIBBONS WAY, UNIT 12, GREAT BARRINGTON	UNK-LG	Copper	LEAD STATUS UNKNOWN
BERNARD GIBBONS WAY, UNIT 13, GREAT BARRINGTON	UNK-LG	Copper	LEAD STATUS UNKNOWN
BERNARD GIBBONS WAY, UNIT 14, GREAT BARRINGTON	UNK-LG	Copper	LEAD STATUS UNKNOWN
BERNARD GIBBONS WAY, UNIT 15, GREAT BARRINGTON	UNK-LG	Copper	LEAD STATUS UNKNOWN
BERNARD GIBBONS WAY, UNIT 17, GREAT BARRINGTON	UNK-LG	Copper	LEAD STATUS UNKNOWN
BERNARD GIBBONS WAY, UNIT 19, GREAT BARRINGTON	UNK-LG	Copper	LEAD STATUS UNKNOWN
BERNARD GIBBONS WAY, UNIT 25, GREAT BARRINGTON	UNK-LG	Copper	LEAD STATUS UNKNOWN
BERNARD GIBBONS WAY, UNIT 27, GREAT BARRINGTON	UNK-LG	Copper	LEAD STATUS UNKNOWN
BERNARD GIBBONS WAY, UNIT 29, GREAT BARRINGTON	UNK-LG	Copper	LEAD STATUS UNKNOWN
BERNARD GIBBONS WAY, UNIT 3, GREAT BARRINGTON	UNK-LG	Copper	LEAD STATUS UNKNOWN
BERNARD GIBBONS WAY, UNIT 4, GREAT BARRINGTON	UNK-LG	Copper	LEAD STATUS UNKNOWN
BERNARD GIBBONS WAY, UNIT 5, GREAT BARRINGTON	UNK-LG	Copper	LEAD STATUS UNKNOWN
BERNARD GIBBONS WAY, UNIT 6, GREAT BARRINGTON	UNK-LG	Copper	LEAD STATUS UNKNOWN
BERNARD GIBBONS WAY, UNIT 8, GREAT BARRINGTON	UNK-LG	Copper	LEAD STATUS UNKNOWN
BERNARD GIBBONS WAY, UNIT 9, GREAT BARRINGTON	UNK-LG	Copper	LEAD STATUS UNKNOWN
BERNARD GIBBONS WAY, UNIT 2, GREAT BARRINGTON	UNK-LG	Copper	LEAD STATUS UNKNOWN
BERNARD GIBBONS WAY, GREAT BARRINGTON	UNK-LG	Copper	LEAD STATUS UNKNOWN
BERNARD GIBBONS WAY, GREAT BARRINGTON	UNK-LG	Copper	LEAD STATUS UNKNOWN
BRICK BUILDING, GREAT BARRINGTON	UNK-LG	UNK-LG	LEAD STATUS UNKNOWN
BRICKHOUSE PUB, GREAT BARRINGTON	UNK-LG	UNK-LG	LEAD STATUS UNKNOWN
5 BROOKSIDE COURT, GREAT BARRINGTON	UNK-LG	UNK-LG	LEAD STATUS UNKNOWN
7 BROOKSIDE COURT, GREAT BARRINGTON	UNK-LG	UNK-LG	LEAD STATUS UNKNOWN
9 BROOKSIDE COURT, GREAT BARRINGTON	UNK-LG	UNK-LG	LEAD STATUS UNKNOWN
10 BROOKSIDE COURT, GREAT BARRINGTON	UNK-LG	UNK-LG	LEAD STATUS UNKNOWN
BUILDING #3 NORTH BLDG.	UNK-LG	UNK-LG	LEAD STATUS UNKNOWN
20 CASTLE STREET, GREAT BARRINGTON	UNK-LG	UNK-LG	LEAD STATUS UNKNOWN
1 CHESTNUT RIDGE, GREAT BARRINGTON	UNK-LG	UNK-LG	LEAD STATUS UNKNOWN
2 CHESTNUT RIDGE, GREAT BARRINGTON	UNK-LG	Copper	LEAD STATUS UNKNOWN
4 CHESTNUT RIDGE, GREAT BARRINGTON	UNK-LG	UNK-LG	LEAD STATUS UNKNOWN
6 CHESTNUT RIDGE, GREAT BARRINGTON	UNK-LG	UNK-LG	LEAD STATUS UNKNOWN
8 CHESTNUT RIDGE, GREAT BARRINGTON	UNK-LG	UNK-LG	LEAD STATUS UNKNOWN
10 CHESTNUT RIDGE, GREAT BARRINGTON	UNK-LG	Galvanized Steel	GALVANIZED REQUIRING REPLACEMENT
181 CHRISTIAN HILL ROAD, GREAT BARRINGTON	UNK-LG	UNK-NOLG	LEAD STATUS UNKNOWN
184 CHRISTIAN HILL ROAD, GREAT BARRINGTON	UNK-LG	UNK-LG	LEAD STATUS UNKNOWN
185 CHRISTIAN HILL ROAD, GREAT BARRINGTON	UNK-LG	Copper	LEAD STATUS UNKNOWN
183B CHRISTIAN HILL ROAD, GREAT BARRINGTON	UNK-LG	UNK-LG	LEAD STATUS UNKNOWN
1 COMSTOCK LANE, GREAT BARRINGTON	UNK-LG	UNK-LG	LEAD STATUS UNKNOWN
3 COMSTOCK LANE, GREAT BARRINGTON	UNK-LG	UNK-LG	LEAD STATUS UNKNOWN
5 COMSTOCK LANE, GREAT BARRINGTON	UNK-LG	Copper	LEAD STATUS UNKNOWN
7 COMSTOCK LANE, GREAT BARRINGTON	UNK-LG	Copper	LEAD STATUS UNKNOWN
11 COMSTOCK LANE, GREAT BARRINGTON	UNK-LG	Copper	LEAD STATUS UNKNOWN
13 COMSTOCK LANE, GREAT BARRINGTON	UNK-LG	UNK-LG	LEAD STATUS UNKNOWN
15 COMSTOCK LANE, GREAT BARRINGTON	UNK-LG	Copper	LEAD STATUS UNKNOWN
3 CONE AVENUE, GREAT BARRINGTON	UNK-LG	UNK-LG	LEAD STATUS UNKNOWN
7 CONE AVENUE, GREAT BARRINGTON	UNK-LG	UNK-LG	LEAD STATUS UNKNOWN
10 CONE AVENUE, GREAT BARRINGTON	UNK-LG	UNK-LG	LEAD STATUS UNKNOWN
11 CONE AVENUE, GREAT BARRINGTON	UNK-LG	UNK-LG	LEAD STATUS UNKNOWN
12 CONE AVENUE, GREAT BARRINGTON	UNK-LG	Copper	LEAD STATUS UNKNOWN
15 CONE AVENUE, GREAT BARRINGTON	UNK-LG	Copper	LEAD STATUS UNKNOWN
17 CONE AVENUE, GREAT BARRINGTON	UNK-LG	UNK-LG	LEAD STATUS UNKNOWN
15A CONE AVENUE, GREAT BARRINGTON	UNK-LG	Plastic	LEAD STATUS UNKNOWN
CONE AVENUE	UNK-LG	UNK-LG	LEAD STATUS UNKNOWN
CONE AVENUE	UNK-LG	UNK-LG	LEAD STATUS UNKNOWN
CONE AVENUE PUMP	UNK-LG	UNK-LG	LEAD STATUS UNKNOWN
203 COTTAGE STREET, GREAT BARRINGTON	UNK-LG	UNK-NOLG	LEAD STATUS UNKNOWN
204 COTTAGE STREET, GREAT BARRINGTON	UNK-LG	UNK-LG	LEAD STATUS UNKNOWN
204 COTTAGE STREET, GREAT BARRINGTON	UNK-LG	UNK-LG	LEAD STATUS UNKNOWN
205 COTTAGE STREET, GREAT BARRINGTON	UNK-LG	UNK-LG	LEAD STATUS UNKNOWN
209 COTTAGE STREET, GREAT BARRINGTON	UNK-LG	UNK-LG	LEAD STATUS UNKNOWN
210 COTTAGE STREET, GREAT BARRINGTON	UNK-LG	UNK-LG	LEAD STATUS UNKNOWN
211 COTTAGE STREET, GREAT BARRINGTON	UNK-LG	UNK-LG	LEAD STATUS UNKNOWN
212 COTTAGE STREET, GREAT BARRINGTON	UNK-LG	UNK-LG	LEAD STATUS UNKNOWN
3 CRIMSON LANE, GREAT BARRINGTON	UNK-LG	Copper	LEAD STATUS UNKNOWN
3 CRIMSON LANE, GREAT BARRINGTON	UNK-LG	Copper	LEAD STATUS UNKNOWN

Housatonic Water Works Company Lead Service Line Inventory

Inventory Notes:

The **Locational Identifier** is a combination of a unique Site ID and the account street address. There may be multiple services going to a street address.

For additional help identifying service line materials, please contact the Housatonic Water Works Company.

The **Public Side** is defined as the service line pipe material from the water main to curb stop.

The **Private Side** is defined as the service line pipe material from the curb stop to the water meter.

UNK-LG = Unknown material, may contain lead

UNK-NOLG = Unknown material, definitely does not contain lead

LOCATIONAL IDENTIFIER	PUBLIC SERVICE LINE MATERIAL	PRIVATE SERVICE LINE MATERIAL	ENTIRE SERVICE LINE CLASSIFICATION
4 CRIMSON LANE, GREAT BARRINGTON	UNK-LG	UNK-LG	LEAD STATUS UNKNOWN
5 CRIMSON LANE, GREAT BARRINGTON	UNK-LG	UNK-NOLG	LEAD STATUS UNKNOWN
8 CRIMSON LANE, GREAT BARRINGTON	UNK-LG	UNK-NOLG	LEAD STATUS UNKNOWN
9 CRIMSON LANE, GREAT BARRINGTON	UNK-LG	UNK-LG	LEAD STATUS UNKNOWN
2 DEPOT STREET, GREAT BARRINGTON	UNK-LG	UNK-LG	LEAD STATUS UNKNOWN
4 DEPOT STREET, GREAT BARRINGTON	UNK-LG	UNK-LG	LEAD STATUS UNKNOWN
5 DEPOT STREET, GREAT BARRINGTON	UNK-LG	UNK-LG	LEAD STATUS UNKNOWN
6 DEPOT STREET, GREAT BARRINGTON	UNK-LG	UNK-NOLG	LEAD STATUS UNKNOWN
7 DEPOT STREET, GREAT BARRINGTON	UNK-LG	UNK-LG	LEAD STATUS UNKNOWN
10 DEPOT STREET, GREAT BARRINGTON	UNK-LG	UNK-LG	LEAD STATUS UNKNOWN
11 DEPOT STREET, GREAT BARRINGTON	UNK-LG	UNK-LG	LEAD STATUS UNKNOWN
53 DIVISION STREET, GREAT BARRINGTON	UNK-LG	Plastic	LEAD STATUS UNKNOWN
54 DIVISION STREET, GREAT BARRINGTON	UNK-LG	Plastic	LEAD STATUS UNKNOWN
59 DIVISION STREET, GREAT BARRINGTON	UNK-LG	UNK-LG	LEAD STATUS UNKNOWN
63 DIVISION STREET, GREAT BARRINGTON	UNK-LG	UNK-LG	LEAD STATUS UNKNOWN
66 DIVISION STREET, GREAT BARRINGTON	UNK-LG	UNK-NOLG	LEAD STATUS UNKNOWN
69 DIVISION STREET, GREAT BARRINGTON	UNK-LG	UNK-LG	LEAD STATUS UNKNOWN
70 DIVISION STREET, GREAT BARRINGTON	UNK-LG	UNK-LG	LEAD STATUS UNKNOWN
74 DIVISION STREET, GREAT BARRINGTON	UNK-LG	Copper	LEAD STATUS UNKNOWN
75 DIVISION STREET APART., GREAT BARRINGTON	UNK-LG	UNK-LG	LEAD STATUS UNKNOWN
76 DIVISION STREET, GREAT BARRINGTON	UNK-LG	UNK-LG	LEAD STATUS UNKNOWN
77 DIVISION STREET, GREAT BARRINGTON	UNK-LG	UNK-LG	LEAD STATUS UNKNOWN
80 DIVISION STREET, GREAT BARRINGTON	UNK-LG	UNK-LG	LEAD STATUS UNKNOWN
81 DIVISION STREET, GREAT BARRINGTON	UNK-LG	UNK-LG	LEAD STATUS UNKNOWN
84 DIVISION STREET, GREAT BARRINGTON	UNK-LG	Copper	LEAD STATUS UNKNOWN
85 DIVISION STREET, GREAT BARRINGTON	UNK-LG	UNK-LG	LEAD STATUS UNKNOWN
87 DIVISION STREET, GREAT BARRINGTON	UNK-LG	UNK-LG	LEAD STATUS UNKNOWN
89 DIVISION STREET, GREAT BARRINGTON	UNK-LG	UNK-LG	LEAD STATUS UNKNOWN
98 DIVISION STREET, GREAT BARRINGTON	UNK-LG	UNK-LG	LEAD STATUS UNKNOWN
135 DIVISION STREET, GREAT BARRINGTON	UNK-LG	UNK-LG	LEAD STATUS UNKNOWN
136 DIVISION STREET, GREAT BARRINGTON	UNK-LG	Plastic	LEAD STATUS UNKNOWN
137 DIVISION STREET, GREAT BARRINGTON	UNK-LG	Plastic	LEAD STATUS UNKNOWN
144 DIVISION STREET, GREAT BARRINGTON	UNK-LG	UNK-LG	LEAD STATUS UNKNOWN
147 DIVISION STREET, GREAT BARRINGTON	Plastic	Plastic	LEAD STATUS UNKNOWN
154 DIVISION STREET, GREAT BARRINGTON	UNK-LG	Copper	LEAD STATUS UNKNOWN
155 DIVISION STREET, GREAT BARRINGTON	UNK-LG	Copper	LEAD STATUS UNKNOWN
157 DIVISION STREET, GREAT BARRINGTON	UNK-LG	Copper	LEAD STATUS UNKNOWN
165 DIVISION STREET, GREAT BARRINGTON	UNK-LG	Galvanized Steel	GALVANIZED REQUIRING REPLACEMENT
DIVISION STREET	UNK-LG	UNK-LG	LEAD STATUS UNKNOWN
1 FAIRVIEW ROAD, GREAT BARRINGTON	UNK-LG	UNK-LG	LEAD STATUS UNKNOWN
6 FAIRVIEW ROAD, GREAT BARRINGTON	UNK-LG	UNK-LG	LEAD STATUS UNKNOWN
9 FAIRVIEW ROAD, GREAT BARRINGTON	UNK-LG	UNK-LG	LEAD STATUS UNKNOWN
10 FAIRVIEW ROAD, GREAT BARRINGTON	UNK-LG	UNK-LG	LEAD STATUS UNKNOWN
11 FAIRVIEW ROAD, GREAT BARRINGTON	UNK-LG	UNK-LG	LEAD STATUS UNKNOWN
12 FAIRVIEW ROAD, GREAT BARRINGTON	UNK-LG	UNK-LG	LEAD STATUS UNKNOWN
14 FAIRVIEW ROAD, GREAT BARRINGTON	UNK-LG	Copper	LEAD STATUS UNKNOWN
1 FOREST STREET, GREAT BARRINGTON	UNK-LG	Copper	LEAD STATUS UNKNOWN
3 FOREST STREET, GREAT BARRINGTON	UNK-LG	UNK-LG	LEAD STATUS UNKNOWN
5 FOREST STREET, GREAT BARRINGTON	UNK-LG	UNK-NOLG	LEAD STATUS UNKNOWN
6 FOREST STREET, GREAT BARRINGTON	UNK-LG	UNK-LG	LEAD STATUS UNKNOWN
7 FOREST STREET, GREAT BARRINGTON	UNK-LG	Plastic	GALVANIZED REQUIRING REPLACEMENT
8 FOREST STREET, GREAT BARRINGTON	UNK-LG	UNK-LG	LEAD STATUS UNKNOWN
9 FOREST STREET, GREAT BARRINGTON	UNK-LG	Copper	LEAD STATUS UNKNOWN
11 FOREST STREET, GREAT BARRINGTON	UNK-LG	UNK-LG	LEAD STATUS UNKNOWN
111 FRONT STREET, GREAT BARRINGTON	UNK-LG	UNK-LG	LEAD STATUS UNKNOWN
117 FRONT STREET, GREAT BARRINGTON	UNK-LG	UNK-LG	LEAD STATUS UNKNOWN
119 FRONT STREET, GREAT BARRINGTON	UNK-LG	UNK-LG	LEAD STATUS UNKNOWN
121 FRONT STREET, GREAT BARRINGTON	UNK-LG	UNK-LG	LEAD STATUS UNKNOWN
123 FRONT STREET, GREAT BARRINGTON	UNK-LG	UNK-LG	LEAD STATUS UNKNOWN
125 FRONT STREET, GREAT BARRINGTON	UNK-LG	UNK-LG	LEAD STATUS UNKNOWN
133 FRONT STREET, GREAT BARRINGTON	UNK-LG	UNK-LG	LEAD STATUS UNKNOWN
135 FRONT STREET, GREAT BARRINGTON	UNK-LG	UNK-LG	LEAD STATUS UNKNOWN
137 FRONT STREET, GREAT BARRINGTON	UNK-LG	UNK-LG	LEAD STATUS UNKNOWN
151 FRONT STREET, GREAT BARRINGTON	UNK-LG	UNK-LG	LEAD STATUS UNKNOWN
155 FRONT STREET, GREAT BARRINGTON	UNK-LG	UNK-LG	LEAD STATUS UNKNOWN
157 FRONT STREET, GREAT BARRINGTON	UNK-LG	UNK-LG	LEAD STATUS UNKNOWN
159 FRONT STREET, GREAT BARRINGTON	UNK-LG	UNK-LG	LEAD STATUS UNKNOWN
163 FRONT STREET, GREAT BARRINGTON	UNK-LG	UNK-LG	LEAD STATUS UNKNOWN
168 FRONT STREET, GREAT BARRINGTON	UNK-LG	UNK-LG	LEAD STATUS UNKNOWN
175 FRONT STREET, GREAT BARRINGTON	UNK-LG	Copper	LEAD STATUS UNKNOWN
181 FRONT STREET, GREAT BARRINGTON	UNK-LG	UNK-LG	LEAD STATUS UNKNOWN
RT 183 FRONT STREET	UNK-LG	UNK-LG	LEAD STATUS UNKNOWN
FRONT STREET	UNK-LG	UNK-LG	LEAD STATUS UNKNOWN
FRONT STREET	UNK-LG	UNK-LG	LEAD STATUS UNKNOWN
FRONT STREET	UNK-LG	UNK-LG	LEAD STATUS UNKNOWN
1 FURNACE ROAD, STOCKBRIDGE	UNK-LG	UNK-NOLG	LEAD STATUS UNKNOWN
2 FURNACE ROAD, STOCKBRIDGE	UNK-LG	UNK-LG	LEAD STATUS UNKNOWN
4 FURNACE ROAD, STOCKBRIDGE	UNK-LG	UNK-LG	LEAD STATUS UNKNOWN

Housatonic Water Works Company Lead Service Line Inventory

Inventory Notes:

The **Locational Identifier** is a combination of a unique Site ID and the account street address. There may be multiple services going to a street address.

For additional help identifying service line materials, please contact the Housatonic Water Works Company.

The **Public Side** is defined as the service line pipe material from the water main to curb stop.

The **Private Side** is defined as the service line pipe material from the curb stop to the water meter.

UNK-LG = Unknown material, may contain lead

UNK-NOLG = Unknown material, definitely does not contain lead

LOCATIONAL IDENTIFIER	PUBLIC SERVICE LINE MATERIAL	PRIVATE SERVICE LINE MATERIAL	ENTIRE SERVICE LINE CLASSIFICATION
6 FURNACE ROAD, STOCKBRIDGE	UNK-LG	UNK-LG	LEAD STATUS UNKNOWN
39 GLENDALE ROAD, STOCKBRIDGE	UNK-LG	UNK-NOLG	LEAD STATUS UNKNOWN
43 GLENDALE ROAD, STOCKBRIDGE	UNK-LG	UNK-LG	LEAD STATUS UNKNOWN
50 GLENDALE ROAD, STOCKBRIDGE	UNK-LG	UNK-LG	LEAD STATUS UNKNOWN
52 GLENDALE ROAD, STOCKBRIDGE	UNK-LG	UNK-LG	LEAD STATUS UNKNOWN
54 GLENDALE ROAD, STOCKBRIDGE	UNK-LG	UNK-LG	LEAD STATUS UNKNOWN
58 GLENDALE ROAD, STOCKBRIDGE	UNK-LG	UNK-NOLG	LEAD STATUS UNKNOWN
60 GLENDALE ROAD, STOCKBRIDGE	UNK-LG	UNK-LG	LEAD STATUS UNKNOWN
62 GLENDALE ROAD, STOCKBRIDGE	UNK-LG	Copper	LEAD STATUS UNKNOWN
64 GLENDALE ROAD, STOCKBRIDGE	UNK-LG	UNK-LG	LEAD STATUS UNKNOWN
5 GRANT LANE, GREAT BARRINGTON	UNK-LG	UNK-LG	LEAD STATUS UNKNOWN
276 GREAT BARRINGTON ROAD, WEST STOCKBRIDGE	UNK-LG	UNK-LG	LEAD STATUS UNKNOWN
278 GREAT BARRINGTON ROAD, WEST STOCKBRIDGE	UNK-LG	UNK-LG	LEAD STATUS UNKNOWN
279 GREAT BARRINGTON ROAD, WEST STOCKBRIDGE	UNK-LG	UNK-LG	LEAD STATUS UNKNOWN
285 GREAT BARRINGTON ROAD, WEST STOCKBRIDGE	UNK-LG	UNK-NOLG	LEAD STATUS UNKNOWN
286 GREAT BARRINGTON ROAD, WEST STOCKBRIDGE	UNK-LG	UNK-LG	LEAD STATUS UNKNOWN
287 GREAT BARRINGTON ROAD, WEST STOCKBRIDGE	UNK-LG	Copper	LEAD STATUS UNKNOWN
289 GREAT BARRINGTON ROAD, WEST STOCKBRIDGE	UNK-LG	UNK-LG	LEAD STATUS UNKNOWN
290 GREAT BARRINGTON ROAD, WEST STOCKBRIDGE	UNK-LG	UNK-LG	LEAD STATUS UNKNOWN
292 GREAT BARRINGTON ROAD, WEST STOCKBRIDGE	UNK-LG	UNK-LG	LEAD STATUS UNKNOWN
294 GREAT BARRINGTON ROAD, WEST STOCKBRIDGE	UNK-LG	UNK-LG	LEAD STATUS UNKNOWN
296 GREAT BARRINGTON ROAD, WEST STOCKBRIDGE	UNK-LG	Copper	LEAD STATUS UNKNOWN
298 GREAT BARRINGTON ROAD, WEST STOCKBRIDGE	UNK-LG	Copper	LEAD STATUS UNKNOWN
304 GREAT BARRINGTON ROAD, WEST STOCKBRIDGE	UNK-LG	UNK-LG	LEAD STATUS UNKNOWN
306 GREAT BARRINGTON ROAD, WEST STOCKBRIDGE	UNK-LG	UNK-LG	LEAD STATUS UNKNOWN
308 GREAT BARRINGTON ROAD, WEST STOCKBRIDGE	UNK-LG	UNK-LG	LEAD STATUS UNKNOWN
310 GREAT BARRINGTON ROAD, WEST STOCKBRIDGE	UNK-LG	Galvanized Steel	GALVANIZED REQUIRING REPLACEMENT
312 GREAT BARRINGTON ROAD, WEST STOCKBRIDGE	UNK-LG	Galvanized Steel	GALVANIZED REQUIRING REPLACEMENT
314 GREAT BARRINGTON ROAD, WEST STOCKBRIDGE	UNK-LG	UNK-LG	LEAD STATUS UNKNOWN
315 GREAT BARRINGTON ROAD, WEST STOCKBRIDGE	UNK-LG	UNK-LG	LEAD STATUS UNKNOWN
317 GREAT BARRINGTON ROAD, WEST STOCKBRIDGE	UNK-LG	UNK-NOLG	LEAD STATUS UNKNOWN
318 GREAT BARRINGTON ROAD, WEST STOCKBRIDGE	UNK-LG	Copper	LEAD STATUS UNKNOWN
210 GROVE STREET, GREAT BARRINGTON	UNK-LG	UNK-LG	LEAD STATUS UNKNOWN
212 GROVE STREET, GREAT BARRINGTON	UNK-LG	UNK-LG	LEAD STATUS UNKNOWN
218 GROVE STREET, GREAT BARRINGTON	UNK-LG	UNK-LG	LEAD STATUS UNKNOWN
220 GROVE STREET, GREAT BARRINGTON	UNK-LG	Copper	LEAD STATUS UNKNOWN
222 GROVE STREET, GREAT BARRINGTON	UNK-LG	UNK-LG	LEAD STATUS UNKNOWN
223 GROVE STREET, GREAT BARRINGTON	UNK-LG	UNK-NOLG	LEAD STATUS UNKNOWN
224 GROVE STREET, GREAT BARRINGTON	UNK-LG	UNK-LG	LEAD STATUS UNKNOWN
226 GROVE STREET UNIT I, GREAT BARRINGTON	UNK-LG	UNK-LG	LEAD STATUS UNKNOWN
228 GROVE STREET UNIT II, GREAT BARRINGTON	UNK-LG	UNK-LG	LEAD STATUS UNKNOWN
227 GROVE STREET, GREAT BARRINGTON	UNK-LG	UNK-LG	LEAD STATUS UNKNOWN
228 GROVE STREET, GREAT BARRINGTON	UNK-LG	UNK-LG	LEAD STATUS UNKNOWN
229 GROVE STREET, GREAT BARRINGTON	UNK-LG	UNK-LG	LEAD STATUS UNKNOWN
230 GROVE STREET, GREAT BARRINGTON	UNK-LG	UNK-LG	LEAD STATUS UNKNOWN
230.5 GROVE STREET, GREAT BARRINGTON	UNK-LG	UNK-LG	LEAD STATUS UNKNOWN
231 GROVE STREET, GREAT BARRINGTON	UNK-LG	UNK-LG	LEAD STATUS UNKNOWN
232 GROVE STREET, GREAT BARRINGTON	UNK-LG	UNK-LG	LEAD STATUS UNKNOWN
233 GROVE STREET, GREAT BARRINGTON	UNK-LG	Copper	LEAD STATUS UNKNOWN
235 GROVE STREET, GREAT BARRINGTON	UNK-LG	UNK-LG	LEAD STATUS UNKNOWN
3 HART STREET, GREAT BARRINGTON	UNK-LG	UNK-LG	LEAD STATUS UNKNOWN
5 HART STREET, GREAT BARRINGTON	UNK-LG	UNK-LG	LEAD STATUS UNKNOWN
7 HART STREET, GREAT BARRINGTON	UNK-LG	UNK-LG	LEAD STATUS UNKNOWN
8 HART STREET, GREAT BARRINGTON	UNK-LG	UNK-LG	LEAD STATUS UNKNOWN
9 HART STREET, GREAT BARRINGTON	UNK-LG	Galvanized Steel	GALVANIZED REQUIRING REPLACEMENT
10 HART STREET, GREAT BARRINGTON	UNK-LG	UNK-NOLG	LEAD STATUS UNKNOWN
11 HART STREET, GREAT BARRINGTON	UNK-LG	UNK-LG	LEAD STATUS UNKNOWN
15 HART STREET, GREAT BARRINGTON	UNK-LG	UNK-LG	LEAD STATUS UNKNOWN
16 HART STREET, GREAT BARRINGTON	UNK-LG	UNK-LG	LEAD STATUS UNKNOWN
17 HART STREET, GREAT BARRINGTON	UNK-LG	UNK-LG	LEAD STATUS UNKNOWN
20 HART STREET, GREAT BARRINGTON	UNK-LG	UNK-LG	LEAD STATUS UNKNOWN
21 HART STREET, GREAT BARRINGTON	UNK-LG	UNK-LG	LEAD STATUS UNKNOWN
23 HART STREET, GREAT BARRINGTON	UNK-LG	UNK-LG	LEAD STATUS UNKNOWN
24 HART STREET, GREAT BARRINGTON	UNK-LG	UNK-LG	LEAD STATUS UNKNOWN
25 HART STREET, GREAT BARRINGTON	UNK-LG	UNK-LG	LEAD STATUS UNKNOWN
28 HART STREET, GREAT BARRINGTON	UNK-LG	UNK-LG	LEAD STATUS UNKNOWN
29 HART STREET, GREAT BARRINGTON	UNK-LG	UNK-LG	LEAD STATUS UNKNOWN
30 HART STREET, GREAT BARRINGTON	UNK-LG	UNK-LG	LEAD STATUS UNKNOWN
32 HART STREET, GREAT BARRINGTON	UNK-LG	UNK-LG	LEAD STATUS UNKNOWN
37 HART STREET SIDE 2, GREAT BARRINGTON	UNK-LG	Copper	LEAD STATUS UNKNOWN
40 HART STREET, GREAT BARRINGTON	UNK-LG	UNK-LG	LEAD STATUS UNKNOWN
41 HART STREET, GREAT BARRINGTON	UNK-LG	UNK-LG	LEAD STATUS UNKNOWN
42 HART STREET, GREAT BARRINGTON	UNK-LG	UNK-LG	LEAD STATUS UNKNOWN
43 HART STREET, GREAT BARRINGTON	UNK-LG	UNK-LG	LEAD STATUS UNKNOWN
45 HART STREET, GREAT BARRINGTON	UNK-LG	UNK-LG	LEAD STATUS UNKNOWN
33A HART STREET, GREAT BARRINGTON	UNK-LG	UNK-LG	LEAD STATUS UNKNOWN
7 HIGH STREET, WEST STOCKBRIDGE	UNK-LG	Copper	LEAD STATUS UNKNOWN
11 HIGH STREET, WEST STOCKBRIDGE	UNK-LG	UNK-LG	LEAD STATUS UNKNOWN

Housatonic Water Works Company Lead Service Line Inventory

Inventory Notes:

The **Locational Identifier** is a combination of a unique Site ID and the account street address. There may be multiple services going to a street address.

For additional help identifying service line materials, please contact the Housatonic Water Works Company.

The **Public Side** is defined as the service line pipe material from the water main to curb stop.

The **Private Side** is defined as the service line pipe material from the curb stop to the water meter.

UNK-LG = Unknown material, may contain lead

UNK-NOLG = Unknown material, definitely does not contain lead

LOCATIONAL IDENTIFIER	PUBLIC SERVICE LINE MATERIAL	PRIVATE SERVICE LINE MATERIAL	ENTIRE SERVICE LINE CLASSIFICATION
17 HIGH STREET, WEST STOCKBRIDGE	UNK-LG	UNK-LG	LEAD STATUS UNKNOWN
19 HIGH STREET, WEST STOCKBRIDGE	UNK-LG	UNK-LG	LEAD STATUS UNKNOWN
20 HIGH STREET, WEST STOCKBRIDGE	UNK-LG	UNK-NOLG	LEAD STATUS UNKNOWN
21 HIGH STREET, WEST STOCKBRIDGE	UNK-LG	UNK-LG	LEAD STATUS UNKNOWN
22 HIGH STREET, WEST STOCKBRIDGE	UNK-LG	UNK-LG	LEAD STATUS UNKNOWN
23 HIGH STREET, WEST STOCKBRIDGE	UNK-LG	UNK-LG	LEAD STATUS UNKNOWN
24 HIGH STREET, WEST STOCKBRIDGE	UNK-LG	UNK-LG	LEAD STATUS UNKNOWN
25 HIGH STREET, WEST STOCKBRIDGE	UNK-LG	UNK-NOLG	LEAD STATUS UNKNOWN
26 HIGH STREET, WEST STOCKBRIDGE	UNK-LG	UNK-LG	LEAD STATUS UNKNOWN
30 HIGH STREET, WEST STOCKBRIDGE	UNK-LG	UNK-LG	LEAD STATUS UNKNOWN
32 HIGH STREET, WEST STOCKBRIDGE	UNK-LG	UNK-LG	LEAD STATUS UNKNOWN
34 HIGH STREET, WEST STOCKBRIDGE	UNK-LG	UNK-LG	LEAD STATUS UNKNOWN
36 HIGH STREET, WEST STOCKBRIDGE	UNK-LG	UNK-LG	LEAD STATUS UNKNOWN
41 HIGH STREET, WEST STOCKBRIDGE	UNK-LG	Copper	LEAD STATUS UNKNOWN
45 HIGH STREET, WEST STOCKBRIDGE	UNK-LG	UNK-LG	LEAD STATUS UNKNOWN
47 HIGH STREET, WEST STOCKBRIDGE	UNK-LG	UNK-LG	LEAD STATUS UNKNOWN
48 HIGH STREET, WEST STOCKBRIDGE	UNK-LG	UNK-NOLG	LEAD STATUS UNKNOWN
49 HIGH STREET, WEST STOCKBRIDGE	UNK-LG	UNK-LG	LEAD STATUS UNKNOWN
58 HIGH STREET, WEST STOCKBRIDGE	UNK-LG	UNK-LG	LEAD STATUS UNKNOWN
59 HIGH STREET, WEST STOCKBRIDGE	UNK-LG	UNK-LG	LEAD STATUS UNKNOWN
60 HIGH STREET, WEST STOCKBRIDGE	UNK-LG	UNK-NOLG	LEAD STATUS UNKNOWN
62 HIGH STREET, WEST STOCKBRIDGE	UNK-LG	UNK-LG	LEAD STATUS UNKNOWN
63 HIGH STREET, WEST STOCKBRIDGE	UNK-LG	UNK-LG	LEAD STATUS UNKNOWN
64 HIGH STREET, WEST STOCKBRIDGE	UNK-LG	UNK-LG	LEAD STATUS UNKNOWN
65 HIGH STREET, WEST STOCKBRIDGE	UNK-LG	UNK-LG	LEAD STATUS UNKNOWN
66 HIGH STREET, WEST STOCKBRIDGE	UNK-LG	UNK-LG	LEAD STATUS UNKNOWN
205 HIGH STREET, GREAT BARRINGTON	UNK-LG	Galvanized Steel	GALVANIZED REQUIRING REPLACEMENT
203L HIGH STREET, GREAT BARRINGTON	UNK-LG	UNK-LG	LEAD STATUS UNKNOWN
HIGH STREET	UNK-LG	UNK-LG	LEAD STATUS UNKNOWN
HIGH STREET	UNK-LG	UNK-LG	LEAD STATUS UNKNOWN
203 HIGHLAND STREET, GREAT BARRINGTON	UNK-LG	UNK-LG	LEAD STATUS UNKNOWN
204 HIGHLAND STREET, GREAT BARRINGTON	UNK-LG	UNK-LG	LEAD STATUS UNKNOWN
206 HIGHLAND STREET, GREAT BARRINGTON	UNK-LG	Copper	LEAD STATUS UNKNOWN
208 HIGHLAND STREET, GREAT BARRINGTON	UNK-LG	Copper	LEAD STATUS UNKNOWN
210 HIGHLAND STREET, GREAT BARRINGTON	UNK-LG	UNK-LG	LEAD STATUS UNKNOWN
211 HIGHLAND STREET, GREAT BARRINGTON	UNK-LG	UNK-LG	LEAD STATUS UNKNOWN
212 HIGHLAND STREET, GREAT BARRINGTON	UNK-LG	UNK-LG	LEAD STATUS UNKNOWN
213 HIGHLAND STREET, GREAT BARRINGTON	UNK-LG	Copper	LEAD STATUS UNKNOWN
214 HIGHLAND STREET, GREAT BARRINGTON	UNK-LG	UNK-LG	LEAD STATUS UNKNOWN
215 HIGHLAND STREET, GREAT BARRINGTON	UNK-LG	UNK-LG	LEAD STATUS UNKNOWN
216 HIGHLAND STREET, GREAT BARRINGTON	UNK-LG	UNK-LG	LEAD STATUS UNKNOWN
217 HIGHLAND STREET, GREAT BARRINGTON	UNK-LG	UNK-LG	LEAD STATUS UNKNOWN
218 HIGHLAND STREET, GREAT BARRINGTON	UNK-LG	UNK-LG	LEAD STATUS UNKNOWN
222 HIGHLAND STREET, GREAT BARRINGTON	UNK-LG	Galvanized Steel	GALVANIZED REQUIRING REPLACEMENT
224 HIGHLAND STREET, GREAT BARRINGTON	UNK-LG	Copper	LEAD STATUS UNKNOWN
1 HOUSATONIC COURT, STOCKBRIDGE	UNK-LG	UNK-LG	LEAD STATUS UNKNOWN
2 HOUSATONIC COURT, STOCKBRIDGE	UNK-LG	UNK-LG	LEAD STATUS UNKNOWN
3 HOUSATONIC COURT, STOCKBRIDGE	UNK-LG	UNK-LG	LEAD STATUS UNKNOWN
5 HOUSATONIC COURT, STOCKBRIDGE	UNK-LG	Galvanized Steel	GALVANIZED REQUIRING REPLACEMENT
7 HOUSATONIC COURT, STOCKBRIDGE	UNK-LG	UNK-LG	LEAD STATUS UNKNOWN
HOUSATONIC COURT	UNK-LG	UNK-LG	LEAD STATUS UNKNOWN
2 KIRK STREET, GREAT BARRINGTON	UNK-LG	UNK-LG	LEAD STATUS UNKNOWN
3 KIRK STREET, GREAT BARRINGTON	UNK-LG	UNK-LG	LEAD STATUS UNKNOWN
4 KIRK STREET, GREAT BARRINGTON	UNK-LG	UNK-LG	LEAD STATUS UNKNOWN
6 KIRK STREET, GREAT BARRINGTON	UNK-LG	UNK-LG	LEAD STATUS UNKNOWN
8 KIRK STREET, GREAT BARRINGTON	UNK-LG	UNK-LG	LEAD STATUS UNKNOWN
9 KIRK STREET, GREAT BARRINGTON	UNK-LG	UNK-LG	LEAD STATUS UNKNOWN
11 KIRK STREET, GREAT BARRINGTON	UNK-LG	UNK-LG	LEAD STATUS UNKNOWN
14 KIRK STREET, GREAT BARRINGTON	UNK-LG	UNK-LG	LEAD STATUS UNKNOWN
15 KIRK STREET, GREAT BARRINGTON	UNK-LG	UNK-LG	LEAD STATUS UNKNOWN
16 KIRK STREET, GREAT BARRINGTON	UNK-LG	UNK-LG	LEAD STATUS UNKNOWN
18 KIRK STREET, GREAT BARRINGTON	UNK-LG	UNK-LG	LEAD STATUS UNKNOWN
19 KIRK STREET, GREAT BARRINGTON	UNK-LG	UNK-LG	LEAD STATUS UNKNOWN
20 KIRK STREET, GREAT BARRINGTON	UNK-LG	UNK-LG	LEAD STATUS UNKNOWN
22 KIRK STREET, GREAT BARRINGTON	UNK-LG	UNK-LG	LEAD STATUS UNKNOWN
24 KIRK STREET, GREAT BARRINGTON	UNK-LG	Copper	LEAD STATUS UNKNOWN
26 KIRK STREET, GREAT BARRINGTON	UNK-LG	UNK-LG	LEAD STATUS UNKNOWN
27 KIRK STREET, GREAT BARRINGTON	UNK-LG	UNK-LG	LEAD STATUS UNKNOWN
28 KIRK STREET, GREAT BARRINGTON	UNK-LG	UNK-LG	LEAD STATUS UNKNOWN
29 KIRK STREET, GREAT BARRINGTON	UNK-LG	UNK-LG	LEAD STATUS UNKNOWN
30 KIRK STREET, GREAT BARRINGTON	UNK-LG	UNK-LG	LEAD STATUS UNKNOWN
31 KIRK STREET, GREAT BARRINGTON	UNK-LG	UNK-LG	LEAD STATUS UNKNOWN
32 KIRK STREET, GREAT BARRINGTON	UNK-LG	UNK-LG	LEAD STATUS UNKNOWN
33 KIRK STREET, GREAT BARRINGTON	UNK-LG	UNK-LG	LEAD STATUS UNKNOWN
35 KIRK STREET, GREAT BARRINGTON	UNK-LG	UNK-LG	LEAD STATUS UNKNOWN
37 KIRK STREET, GREAT BARRINGTON	UNK-LG	UNK-NOLG	LEAD STATUS UNKNOWN
39 KIRK STREET, GREAT BARRINGTON	UNK-LG	Copper	LEAD STATUS UNKNOWN
40 KIRK STREET, GREAT BARRINGTON	UNK-LG	UNK-NOLG	LEAD STATUS UNKNOWN

Housatonic Water Works Company Lead Service Line Inventory

Inventory Notes:

The **Locational Identifier** is a combination of a unique Site ID and the account street address. There may be multiple services going to a street address.

For additional help identifying service line materials, please contact the Housatonic Water Works Company.

The **Public Side** is defined as the service line pipe material from the water main to curb stop.

The **Private Side** is defined as the service line pipe material from the curb stop to the water meter.

UNK-LG = Unknown material, may contain lead

UNK-NOLG = Unknown material, definitely does not contain lead

LOCATIONAL IDENTIFIER	PUBLIC SERVICE LINE MATERIAL	PRIVATE SERVICE LINE MATERIAL	ENTIRE SERVICE LINE CLASSIFICATION
42 KIRK STREET, GREAT BARRINGTON	UNK-LG	Galvanized Steel	GALVANIZED REQUIRING REPLACEMENT
15 L MEADOW STREET, GREAT BARRINGTON	UNK-LG	UNK-LG	LEAD STATUS UNKNOWN
4 LINDA LANE, GREAT BARRINGTON	UNK-LG	UNK-LG	LEAD STATUS UNKNOWN
6 LINDA LANE, GREAT BARRINGTON	UNK-LG	UNK-LG	LEAD STATUS UNKNOWN
7 LINDA LANE, GREAT BARRINGTON	UNK-LG	Copper	LEAD STATUS UNKNOWN
9 LINDA LANE, GREAT BARRINGTON	UNK-LG	UNK-LG	LEAD STATUS UNKNOWN
10 LINDA LANE, GREAT BARRINGTON	UNK-LG	UNK-NOLG	LEAD STATUS UNKNOWN
12 LINDA LANE, GREAT BARRINGTON	UNK-LG	UNK-LG	LEAD STATUS UNKNOWN
18 LINDA LANE, GREAT BARRINGTON	UNK-LG	UNK-LG	LEAD STATUS UNKNOWN
19 LINDA LANE, GREAT BARRINGTON	UNK-LG	UNK-LG	LEAD STATUS UNKNOWN
20 LINDA LANE, GREAT BARRINGTON	UNK-LG	Copper	LEAD STATUS UNKNOWN
22 LINDA LANE, GREAT BARRINGTON	UNK-LG	Copper	LEAD STATUS UNKNOWN
25 LINDA LANE, GREAT BARRINGTON	UNK-LG	UNK-LG	LEAD STATUS UNKNOWN
26 LINDA LANE, GREAT BARRINGTON	UNK-LG	UNK-LG	LEAD STATUS UNKNOWN
29 LINDA LANE, GREAT BARRINGTON	UNK-LG	UNK-LG	LEAD STATUS UNKNOWN
30 LINDA LANE, GREAT BARRINGTON	UNK-LG	UNK-LG	LEAD STATUS UNKNOWN
31 LINDA LANE, GREAT BARRINGTON	UNK-LG	UNK-LG	LEAD STATUS UNKNOWN
4 LONG POND ROAD, GREAT BARRINGTON	UNK-LG	Copper	LEAD STATUS UNKNOWN
205 LONG POND ROAD, GREAT BARRINGTON	UNK-LG	Copper	LEAD STATUS UNKNOWN
5 LUCKY LANE, GREAT BARRINGTON	UNK-LG	Copper	LEAD STATUS UNKNOWN
1002 MAIN STREET, GREAT BARRINGTON	UNK-LG	UNK-LG	LEAD STATUS UNKNOWN
1010 MAIN STREET, GREAT BARRINGTON	UNK-LG	UNK-LG	LEAD STATUS UNKNOWN
1011 MAIN STREET, GREAT BARRINGTON	UNK-LG	Copper	LEAD STATUS UNKNOWN
1015 MAIN STREET, GREAT BARRINGTON	UNK-LG	UNK-LG	LEAD STATUS UNKNOWN
1019 MAIN STREET, GREAT BARRINGTON	UNK-LG	UNK-LG	LEAD STATUS UNKNOWN
1020 MAIN STREET, GREAT BARRINGTON	UNK-LG	Copper	LEAD STATUS UNKNOWN
1026 MAIN STREET, GREAT BARRINGTON	UNK-LG	Galvanized Steel	GALVANIZED REQUIRING REPLACEMENT
1027 MAIN STREET, GREAT BARRINGTON	UNK-LG	UNK-LG	LEAD STATUS UNKNOWN
1033 MAIN STREET, GREAT BARRINGTON	UNK-LG	Copper	LEAD STATUS UNKNOWN
1035 MAIN STREET, GREAT BARRINGTON	UNK-LG	UNK-LG	LEAD STATUS UNKNOWN
1043 MAIN STREET, GREAT BARRINGTON	UNK-LG	Copper	LEAD STATUS UNKNOWN
1045 MAIN STREET, GREAT BARRINGTON	UNK-LG	UNK-LG	LEAD STATUS UNKNOWN
1047 MAIN STREET, GREAT BARRINGTON	UNK-LG	Copper	LEAD STATUS UNKNOWN
1048 MAIN STREET, GREAT BARRINGTON	UNK-LG	Copper	LEAD STATUS UNKNOWN
1049 MAIN STREET, GREAT BARRINGTON	UNK-LG	UNK-LG	LEAD STATUS UNKNOWN
1050 MAIN STREET, GREAT BARRINGTON	UNK-LG	UNK-LG	LEAD STATUS UNKNOWN
1051 MAIN STREET, GREAT BARRINGTON	UNK-LG	UNK-LG	LEAD STATUS UNKNOWN
1052 MAIN STREET, GREAT BARRINGTON	UNK-LG	UNK-LG	LEAD STATUS UNKNOWN
1052 MAIN STREET, GREAT BARRINGTON	UNK-LG	UNK-LG	LEAD STATUS UNKNOWN
1053 MAIN STREET, GREAT BARRINGTON	UNK-LG	Copper	LEAD STATUS UNKNOWN
1055 MAIN STREET, GREAT BARRINGTON	UNK-LG	Copper	LEAD STATUS UNKNOWN
1057 MAIN STREET, GREAT BARRINGTON	UNK-LG	Copper	LEAD STATUS UNKNOWN
1060 MAIN STREET, GREAT BARRINGTON	UNK-LG	UNK-LG	LEAD STATUS UNKNOWN
1061 MAIN STREET, GREAT BARRINGTON	UNK-LG	UNK-LG	LEAD STATUS UNKNOWN
1062 MAIN STREET, GREAT BARRINGTON	UNK-LG	UNK-LG	LEAD STATUS UNKNOWN
1063 MAIN STREET, GREAT BARRINGTON	UNK-LG	UNK-LG	LEAD STATUS UNKNOWN
1065 MAIN STREET, GREAT BARRINGTON	UNK-LG	UNK-LG	LEAD STATUS UNKNOWN
1066 MAIN STREET, GREAT BARRINGTON	UNK-LG	UNK-LG	LEAD STATUS UNKNOWN
1067 MAIN STREET, GREAT BARRINGTON	UNK-LG	UNK-LG	LEAD STATUS UNKNOWN
1068 MAIN STREET, GREAT BARRINGTON	UNK-LG	UNK-LG	LEAD STATUS UNKNOWN
1068 MAIN STREET, GREAT BARRINGTON	UNK-LG	UNK-LG	LEAD STATUS UNKNOWN
1069 MAIN STREET, GREAT BARRINGTON	UNK-LG	UNK-LG	LEAD STATUS UNKNOWN
1070 MAIN STREET, GREAT BARRINGTON	UNK-LG	UNK-LG	LEAD STATUS UNKNOWN
1071 MAIN STREET, GREAT BARRINGTON	UNK-LG	Galvanized Steel	GALVANIZED REQUIRING REPLACEMENT
1072 MAIN STREET, GREAT BARRINGTON	UNK-LG	UNK-LG	LEAD STATUS UNKNOWN
1075 MAIN STREET, GREAT BARRINGTON	UNK-LG	UNK-LG	LEAD STATUS UNKNOWN
1076 MAIN STREET, GREAT BARRINGTON	UNK-LG	UNK-LG	LEAD STATUS UNKNOWN
1077 MAIN STREET, GREAT BARRINGTON	UNK-LG	UNK-LG	LEAD STATUS UNKNOWN
1078 MAIN STREET, GREAT BARRINGTON	UNK-LG	UNK-LG	LEAD STATUS UNKNOWN
1079 MAIN STREET, GREAT BARRINGTON	UNK-LG	UNK-LG	LEAD STATUS UNKNOWN
1081 MAIN STREET, GREAT BARRINGTON	UNK-LG	UNK-LG	LEAD STATUS UNKNOWN
1084 MAIN STREET, GREAT BARRINGTON	UNK-LG	UNK-LG	LEAD STATUS UNKNOWN
1086 MAIN STREET, GREAT BARRINGTON	UNK-LG	UNK-LG	LEAD STATUS UNKNOWN
1088 MAIN STREET, GREAT BARRINGTON	UNK-LG	UNK-LG	LEAD STATUS UNKNOWN
1089 MAIN STREET, GREAT BARRINGTON	UNK-LG	UNK-LG	LEAD STATUS UNKNOWN
1090 MAIN STREET, GREAT BARRINGTON	UNK-LG	UNK-LG	LEAD STATUS UNKNOWN
1090 MAIN STREET, GREAT BARRINGTON	UNK-LG	UNK-LG	LEAD STATUS UNKNOWN
1091 MAIN STREET, GREAT BARRINGTON	UNK-LG	UNK-LG	LEAD STATUS UNKNOWN
1092 MAIN STREET, GREAT BARRINGTON	UNK-LG	UNK-LG	LEAD STATUS UNKNOWN
1093 MAIN STREET, GREAT BARRINGTON	UNK-LG	UNK-LG	LEAD STATUS UNKNOWN
1094 MAIN STREET, GREAT BARRINGTON	UNK-LG	Galvanized Steel	GALVANIZED REQUIRING REPLACEMENT
1096 MAIN STREET, GREAT BARRINGTON	UNK-LG	UNK-LG	LEAD STATUS UNKNOWN
1098 MAIN STREET R, GREAT BARRINGTON	UNK-LG	UNK-LG	LEAD STATUS UNKNOWN
1098 MAIN STREET LEFT, GREAT BARRINGTON	UNK-LG	UNK-LG	LEAD STATUS UNKNOWN
1099 MAIN STREET, GREAT BARRINGTON	UNK-LG	Copper	LEAD STATUS UNKNOWN
1100 MAIN STREET, GREAT BARRINGTON	UNK-LG	UNK-LG	LEAD STATUS UNKNOWN
APT A MAIN STREET, GREAT BARRINGTON	UNK-LG	UNK-LG	LEAD STATUS UNKNOWN
MAIN STREET/PLEASANT	UNK-LG	UNK-LG	LEAD STATUS UNKNOWN

Housatonic Water Works Company Lead Service Line Inventory

Inventory Notes:

The **Locational Identifier** is a combination of a unique Site ID and the account street address. There may be multiple services going to a street address.

For additional help identifying service line materials, please contact the Housatonic Water Works Company.

The **Public Side** is defined as the service line pipe material from the water main to curb stop.

The **Private Side** is defined as the service line pipe material from the curb stop to the water meter.

UNK-LG = Unknown material, may contain lead

UNK-NOLG = Unknown material, definitely does not contain lead

LOCATIONAL IDENTIFIER	PUBLIC SERVICE LINE MATERIAL	PRIVATE SERVICE LINE MATERIAL	ENTIRE SERVICE LINE CLASSIFICATION
4 MAPLE STREET, GREAT BARRINGTON	UNK-LG	UNK-LG	LEAD STATUS UNKNOWN
5 MAPLE STREET, GREAT BARRINGTON	UNK-LG	UNK-LG	LEAD STATUS UNKNOWN
6 MAPLE STREET, GREAT BARRINGTON	UNK-LG	UNK-LG	LEAD STATUS UNKNOWN
7 MAPLE STREET, GREAT BARRINGTON	UNK-LG	UNK-NOLG	LEAD STATUS UNKNOWN
8 MAPLE STREET, GREAT BARRINGTON	UNK-LG	UNK-LG	LEAD STATUS UNKNOWN
10 MAPLE STREET, GREAT BARRINGTON	UNK-LG	UNK-LG	LEAD STATUS UNKNOWN
11 MAPLE STREET, GREAT BARRINGTON	UNK-LG	UNK-LG	LEAD STATUS UNKNOWN
12 MAPLE STREET, GREAT BARRINGTON	UNK-LG	UNK-LG	LEAD STATUS UNKNOWN
13 MAPLE STREET, GREAT BARRINGTON	UNK-LG	UNK-LG	LEAD STATUS UNKNOWN
15 MAPLE STREET, GREAT BARRINGTON	UNK-LG	UNK-LG	LEAD STATUS UNKNOWN
16 MAPLE STREET, GREAT BARRINGTON	UNK-LG	UNK-LG	LEAD STATUS UNKNOWN
17 MAPLE STREET, GREAT BARRINGTON	UNK-LG	Plastic	LEAD STATUS UNKNOWN
19 MAPLE STREET, GREAT BARRINGTON	UNK-LG	UNK-LG	LEAD STATUS UNKNOWN
21 MAPLE STREET, GREAT BARRINGTON	UNK-LG	Copper	LEAD STATUS UNKNOWN
3 MEADOW STREET, GREAT BARRINGTON	UNK-LG	UNK-LG	LEAD STATUS UNKNOWN
4 MEADOW STREET, GREAT BARRINGTON	UNK-LG	UNK-LG	LEAD STATUS UNKNOWN
5 MEADOW STREET, GREAT BARRINGTON	UNK-LG	UNK-LG	LEAD STATUS UNKNOWN
6 MEADOW STREET, GREAT BARRINGTON	UNK-LG	UNK-LG	LEAD STATUS UNKNOWN
7 MEADOW STREET, GREAT BARRINGTON	UNK-LG	UNK-LG	LEAD STATUS UNKNOWN
9 MEADOW STREET, GREAT BARRINGTON	UNK-LG	UNK-LG	LEAD STATUS UNKNOWN
12 MEADOW STREET, GREAT BARRINGTON	UNK-LG	UNK-LG	LEAD STATUS UNKNOWN
17 MEADOW STREET, GREAT BARRINGTON	UNK-LG	UNK-LG	LEAD STATUS UNKNOWN
18 MEADOW STREET, GREAT BARRINGTON	UNK-LG	UNK-LG	LEAD STATUS UNKNOWN
19 MEADOW STREET, GREAT BARRINGTON	UNK-LG	UNK-LG	LEAD STATUS UNKNOWN
205 MEADOW LANE, GREAT BARRINGTON	UNK-LG	UNK-LG	LEAD STATUS UNKNOWN
210 MEADOW LANE, GREAT BARRINGTON	UNK-LG	Copper	LEAD STATUS UNKNOWN
10L MEADOW STREET, GREAT BARRINGTON	UNK-LG	UNK-LG	LEAD STATUS UNKNOWN
10R MEADOW STREET, GREAT BARRINGTON	UNK-LG	UNK-LG	LEAD STATUS UNKNOWN
14R MEADOW STREET, GREAT BARRINGTON	UNK-LG	Copper	LEAD STATUS UNKNOWN
14R MEADOW STREET, GREAT BARRINGTON	UNK-LG	Copper	LEAD STATUS UNKNOWN
15R MEADOW STREET, GREAT BARRINGTON	UNK-LG	UNK-LG	LEAD STATUS UNKNOWN
16L MEADOW STREET, GREAT BARRINGTON	UNK-LG	UNK-LG	LEAD STATUS UNKNOWN
16R MEADOW STREET, GREAT BARRINGTON	UNK-LG	UNK-LG	LEAD STATUS UNKNOWN
8L MEADOW STREET, GREAT BARRINGTON	UNK-LG	UNK-LG	LEAD STATUS UNKNOWN
8R MEADOW STREET, GREAT BARRINGTON	UNK-LG	UNK-LG	LEAD STATUS UNKNOWN
3 MOUNTAIN STREET, GREAT BARRINGTON	UNK-LG	UNK-LG	LEAD STATUS UNKNOWN
5 MOUNTAIN STREET, GREAT BARRINGTON	UNK-LG	UNK-LG	LEAD STATUS UNKNOWN
5 MOUNTAIN VIEW AVENUE, GREAT BARRINGTON	UNK-LG	Copper	LEAD STATUS UNKNOWN
6 MOUNTAIN STREET, GREAT BARRINGTON	UNK-LG	Copper	LEAD STATUS UNKNOWN
7 MOUNTAIN STREET, GREAT BARRINGTON	UNK-LG	UNK-LG	LEAD STATUS UNKNOWN
8 MOUNTAIN STREET, GREAT BARRINGTON	UNK-LG	Plastic	LEAD STATUS UNKNOWN
9 MOUNTAIN STREET, GREAT BARRINGTON	UNK-LG	Copper	LEAD STATUS UNKNOWN
9 MOUNTAIN VIEW AVENUE, GREAT BARRINGTON	UNK-LG	UNK-LG	LEAD STATUS UNKNOWN
10 MOUNTAIN STREET, GREAT BARRINGTON	UNK-LG	UNK-LG	LEAD STATUS UNKNOWN
11 MOUNTAIN STREET, GREAT BARRINGTON	UNK-LG	Copper	LEAD STATUS UNKNOWN
11 MOUNTAIN VIEW ST, GREAT BARRINGTON	UNK-LG	UNK-LG	LEAD STATUS UNKNOWN
12 MOUNTAIN STREET, GREAT BARRINGTON	UNK-LG	UNK-LG	LEAD STATUS UNKNOWN
1 NOLAN DRIVE, GREAT BARRINGTON	UNK-LG	Copper	LEAD STATUS UNKNOWN
6 NOLAN DRIVE, GREAT BARRINGTON	UNK-LG	Copper	LEAD STATUS UNKNOWN
1 NORTH HOUSATONIC COURT, STOCKBRIDGE	UNK-LG	UNK-NOLG	LEAD STATUS UNKNOWN
2 NORTH HOUSATONIC COURT, STOCKBRIDGE	UNK-LG	UNK-LG	LEAD STATUS UNKNOWN
3 NORTH HOUSATONIC COURT, STOCKBRIDGE	UNK-LG	UNK-LG	LEAD STATUS UNKNOWN
201 NORTH STREET, GREAT BARRINGTON	UNK-LG	UNK-LG	LEAD STATUS UNKNOWN
203 NORTH STREET, GREAT BARRINGTON	UNK-LG	UNK-LG	LEAD STATUS UNKNOWN
205 NORTH STREET, GREAT BARRINGTON	UNK-LG	UNK-LG	LEAD STATUS UNKNOWN
206 NORTH STREET, GREAT BARRINGTON	UNK-LG	UNK-LG	LEAD STATUS UNKNOWN
207 NORTH STREET, GREAT BARRINGTON	UNK-LG	UNK-LG	LEAD STATUS UNKNOWN
209 NORTH STREET, GREAT BARRINGTON	UNK-LG	UNK-LG	LEAD STATUS UNKNOWN
233 NORTH PLAIN ROAD, GREAT BARRINGTON	UNK-LG	UNK-NOLG	LEAD STATUS UNKNOWN
234 NORTH PLAIN ROAD, GREAT BARRINGTON	UNK-LG	UNK-LG	LEAD STATUS UNKNOWN
237 NORTH PLAIN ROAD, GREAT BARRINGTON	UNK-LG	UNK-LG	LEAD STATUS UNKNOWN
238 NORTH PLAIN ROAD, GREAT BARRINGTON	UNK-LG	UNK-LG	LEAD STATUS UNKNOWN
239 NORTH PLAIN ROAD, GREAT BARRINGTON	UNK-LG	Galvanized Steel	GALVANIZED REQUIRING REPLACEMENT
241 NORTH PLAIN ROAD, GREAT BARRINGTON	UNK-LG	UNK-LG	LEAD STATUS UNKNOWN
249 NORTH PLAIN ROAD, GREAT BARRINGTON	UNK-LG	UNK-NOLG	LEAD STATUS UNKNOWN
249 NORTH PLAIN ROAD, GREAT BARRINGTON	UNK-LG	UNK-NOLG	LEAD STATUS UNKNOWN
249 NORTH PLAIN ROAD, GREAT BARRINGTON	UNK-LG	UNK-NOLG	LEAD STATUS UNKNOWN
249 NORTH PLAIN ROAD, GREAT BARRINGTON	UNK-LG	UNK-NOLG	LEAD STATUS UNKNOWN
249 NORTH PLAIN ROAD, GREAT BARRINGTON	UNK-LG	UNK-NOLG	LEAD STATUS UNKNOWN
249 NORTH PLAIN ROAD, GREAT BARRINGTON	UNK-LG	UNK-NOLG	LEAD STATUS UNKNOWN
249 NORTH PLAIN ROAD, GREAT BARRINGTON	UNK-LG	UNK-NOLG	LEAD STATUS UNKNOWN
249 NORTH PLAIN ROAD, GREAT BARRINGTON	UNK-LG	UNK-NOLG	LEAD STATUS UNKNOWN
249 NORTH PLAIN ROAD, THE WOODS, GREAT BARRINGTON	UNK-LG	UNK-NOLG	LEAD STATUS UNKNOWN
249 NORTH PLAIN ROAD, GREAT BARRINGTON	UNK-LG	UNK-NOLG	LEAD STATUS UNKNOWN
251 NORTH PLAIN ROAD, GREAT BARRINGTON	UNK-LG	Copper	LEAD STATUS UNKNOWN
253 NORTH PLAIN ROAD, GREAT BARRINGTON	UNK-LG	UNK-LG	LEAD STATUS UNKNOWN
257 NORTH PLAIN ROAD, GREAT BARRINGTON	UNK-LG	UNK-LG	LEAD STATUS UNKNOWN
259 NORTH PLAIN ROAD, GREAT BARRINGTON	UNK-LG	UNK-LG	LEAD STATUS UNKNOWN

Housatonic Water Works Company Lead Service Line Inventory

Inventory Notes:

The **Locational Identifier** is a combination of a unique Site ID and the account street address. There may be multiple services going to a street address.

For additional help identifying service line materials, please contact the Housatonic Water Works Company.

The **Public Side** is defined as the service line pipe material from the water main to curb stop.

The **Private Side** is defined as the service line pipe material from the curb stop to the water meter.

UNK-LG = Unknown material, may contain lead

UNK-NOLG = Unknown material, definitely does not contain lead

LOCATIONAL IDENTIFIER	PUBLIC SERVICE LINE MATERIAL	PRIVATE SERVICE LINE MATERIAL	ENTIRE SERVICE LINE CLASSIFICATION
260 NORTH PLAIN ROAD, GREAT BARRINGTON	UNK-LG	Copper	LEAD STATUS UNKNOWN
261 NORTH PLAIN ROAD, GREAT BARRINGTON	UNK-LG	UNK-LG	LEAD STATUS UNKNOWN
263 NORTH PLAIN ROAD, GREAT BARRINGTON	UNK-LG	UNK-LG	LEAD STATUS UNKNOWN
264 NORTH PLAIN ROAD, GREAT BARRINGTON	UNK-LG	UNK-LG	LEAD STATUS UNKNOWN
265 NORTH PLAIN ROAD, GREAT BARRINGTON	UNK-LG	UNK-LG	LEAD STATUS UNKNOWN
266 NORTH PLAIN ROAD, GREAT BARRINGTON	UNK-LG	UNK-LG	LEAD STATUS UNKNOWN
268 NORTH PLAIN ROAD, GREAT BARRINGTON	UNK-LG	UNK-LG	LEAD STATUS UNKNOWN
269 NORTH PLAIN ROAD, GREAT BARRINGTON	UNK-LG	UNK-LG	LEAD STATUS UNKNOWN
271 NORTH PLAIN ROAD, GREAT BARRINGTON	UNK-LG	Copper	LEAD STATUS UNKNOWN
273 NORTH PLAIN ROAD, GREAT BARRINGTON	UNK-LG	UNK-LG	LEAD STATUS UNKNOWN
274 NORTH PLAIN ROAD, GREAT BARRINGTON	UNK-LG	UNK-LG	LEAD STATUS UNKNOWN
276 NORTH PLAIN ROAD, GREAT BARRINGTON	UNK-LG	UNK-LG	LEAD STATUS UNKNOWN
277 NORTH PLAIN ROAD, GREAT BARRINGTON	UNK-LG	Plastic	LEAD STATUS UNKNOWN
279 NORTH PLAIN ROAD, GREAT BARRINGTON	UNK-LG	UNK-LG	LEAD STATUS UNKNOWN
280 NORTH PLAIN ROAD, GREAT BARRINGTON	UNK-LG	UNK-LG	LEAD STATUS UNKNOWN
280 NORTH PLAIN ROAD, GREAT BARRINGTON	UNK-LG	UNK-LG	LEAD STATUS UNKNOWN
281 NORTH PLAIN ROAD, GREAT BARRINGTON	UNK-LG	UNK-LG	LEAD STATUS UNKNOWN
285 NORTH PLAIN ROAD, GREAT BARRINGTON	UNK-LG	UNK-LG	LEAD STATUS UNKNOWN
286 NORTH PLAIN ROAD, GREAT BARRINGTON	UNK-LG	UNK-NOLG	LEAD STATUS UNKNOWN
289 NORTH PLAIN ROAD, GREAT BARRINGTON	UNK-LG	UNK-LG	LEAD STATUS UNKNOWN
291 NORTH PLAIN ROAD, GREAT BARRINGTON	UNK-LG	UNK-NOLG	LEAD STATUS UNKNOWN
294 NORTH PLAIN ROAD, GREAT BARRINGTON	UNK-LG	UNK-LG	LEAD STATUS UNKNOWN
295 NORTH PLAIN ROAD, GREAT BARRINGTON	UNK-LG	UNK-LG	LEAD STATUS UNKNOWN
296 NORTH PLAIN ROAD, GREAT BARRINGTON	UNK-LG	UNK-LG	LEAD STATUS UNKNOWN
298 NORTH PLAIN ROAD, GREAT BARRINGTON	UNK-LG	UNK-NOLG	LEAD STATUS UNKNOWN
303 NORTH PLAIN ROAD, GREAT BARRINGTON	UNK-LG	Copper	LEAD STATUS UNKNOWN
307 NORTH PLAIN ROAD, GREAT BARRINGTON	UNK-LG	UNK-LG	LEAD STATUS UNKNOWN
309 NORTH PLAIN ROAD, GREAT BARRINGTON	UNK-LG	UNK-LG	LEAD STATUS UNKNOWN
310 NORTH PLAIN ROAD, GREAT BARRINGTON	UNK-LG	UNK-LG	LEAD STATUS UNKNOWN
311 NORTH PLAIN ROAD, GREAT BARRINGTON	UNK-LG	UNK-LG	LEAD STATUS UNKNOWN
314 NORTH PLAIN ROAD, GREAT BARRINGTON	UNK-LG	Copper	LEAD STATUS UNKNOWN
316 NORTH PLAIN ROAD, GREAT BARRINGTON	UNK-LG	Copper	LEAD STATUS UNKNOWN
317 NORTH PLAIN ROAD, GREAT BARRINGTON	UNK-LG	Plastic	LEAD STATUS UNKNOWN
319 NORTH PLAIN ROAD, GREAT BARRINGTON	UNK-LG	UNK-LG	LEAD STATUS UNKNOWN
321 NORTH PLAIN ROAD, GREAT BARRINGTON	UNK-LG	UNK-NOLG	LEAD STATUS UNKNOWN
323 NORTH PLAIN ROAD, GREAT BARRINGTON	UNK-LG	UNK-LG	LEAD STATUS UNKNOWN
325 NORTH PLAIN ROAD, GREAT BARRINGTON	UNK-LG	UNK-LG	LEAD STATUS UNKNOWN
326 NORTH PLAIN ROAD, GREAT BARRINGTON	UNK-LG	Plastic	LEAD STATUS UNKNOWN
332 NORTH PLAIN ROAD, GREAT BARRINGTON	UNK-LG	UNK-LG	LEAD STATUS UNKNOWN
334 NORTH PLAIN ROAD, GREAT BARRINGTON	UNK-LG	UNK-LG	LEAD STATUS UNKNOWN
337 NORTH PLAIN ROAD, GREAT BARRINGTON	UNK-LG	UNK-LG	LEAD STATUS UNKNOWN
342 NORTH PLAIN ROAD, GREAT BARRINGTON	UNK-LG	UNK-LG	LEAD STATUS UNKNOWN
349 NORTH PLAIN ROAD, GREAT BARRINGTON	UNK-LG	UNK-LG	LEAD STATUS UNKNOWN
351 NORTH PLAIN ROAD, GREAT BARRINGTON	UNK-LG	UNK-NOLG	LEAD STATUS UNKNOWN
353 NORTH PLAIN ROAD, GREAT BARRINGTON	UNK-LG	UNK-NOLG	LEAD STATUS UNKNOWN
354 NORTH PLAIN ROAD, GREAT BARRINGTON	UNK-LG	UNK-LG	LEAD STATUS UNKNOWN
355 NORTH PLAIN ROAD, GREAT BARRINGTON	UNK-LG	Copper	LEAD STATUS UNKNOWN
356 NORTH PLAIN ROAD, GREAT BARRINGTON	UNK-LG	UNK-LG	LEAD STATUS UNKNOWN
357 NORTH PLAIN ROAD, GREAT BARRINGTON	UNK-LG	UNK-LG	LEAD STATUS UNKNOWN
358 NORTH PLAIN ROAD, GREAT BARRINGTON	UNK-LG	Galvanized Steel	GALVANIZED REQUIRING REPLACEMENT
359 NORTH PLAIN ROAD, GREAT BARRINGTON	UNK-LG	UNK-NOLG	LEAD STATUS UNKNOWN
360 NORTH PLAIN ROAD, GREAT BARRINGTON	UNK-LG	UNK-LG	LEAD STATUS UNKNOWN
362 NORTH PLAIN ROAD, GREAT BARRINGTON	UNK-LG	Galvanized Steel	GALVANIZED REQUIRING REPLACEMENT
364 NORTH PLAIN ROAD, GREAT BARRINGTON	UNK-LG	UNK-LG	LEAD STATUS UNKNOWN
366 NORTH PLAIN ROAD, GREAT BARRINGTON	UNK-LG	UNK-LG	LEAD STATUS UNKNOWN
367 NORTH PLAIN ROAD, GREAT BARRINGTON	UNK-LG	Galvanized Steel	GALVANIZED REQUIRING REPLACEMENT
370 NORTH PLAIN ROAD, GREAT BARRINGTON	UNK-LG	Galvanized Steel	GALVANIZED REQUIRING REPLACEMENT
371 NORTH PLAIN ROAD, GREAT BARRINGTON	UNK-LG	UNK-NOLG	LEAD STATUS UNKNOWN
372 NORTH PLAIN ROAD, GREAT BARRINGTON	UNK-LG	UNK-LG	LEAD STATUS UNKNOWN
373 NORTH PLAIN ROAD, GREAT BARRINGTON	UNK-LG	UNK-LG	LEAD STATUS UNKNOWN
375 NORTH PLAIN ROAD, GREAT BARRINGTON	UNK-LG	UNK-LG	LEAD STATUS UNKNOWN
377 NORTH PLAIN ROAD, GREAT BARRINGTON	UNK-LG	UNK-NOLG	LEAD STATUS UNKNOWN
383 NORTH PLAIN ROAD, GREAT BARRINGTON	UNK-LG	Copper	LEAD STATUS UNKNOWN
384 NORTH PLAIN ROAD, GREAT BARRINGTON	UNK-LG	UNK-LG	LEAD STATUS UNKNOWN
386 NORTH PLAIN ROAD, GREAT BARRINGTON	UNK-LG	UNK-LG	LEAD STATUS UNKNOWN
390 NORTH PLAIN ROAD, GREAT BARRINGTON	UNK-LG	UNK-LG	LEAD STATUS UNKNOWN
391 NORTH PLAIN ROAD, GREAT BARRINGTON	UNK-LG	UNK-LG	LEAD STATUS UNKNOWN
392 NORTH PLAIN ROAD, GREAT BARRINGTON	UNK-LG	UNK-LG	LEAD STATUS UNKNOWN
393 NORTH PLAIN ROAD, GREAT BARRINGTON	UNK-LG	UNK-LG	LEAD STATUS UNKNOWN
394 NORTH PLAIN ROAD, GREAT BARRINGTON	UNK-LG	UNK-LG	LEAD STATUS UNKNOWN
396 NORTH PLAIN ROAD, GREAT BARRINGTON	UNK-LG	UNK-LG	LEAD STATUS UNKNOWN
397 NORTH PLAIN ROAD, GREAT BARRINGTON	UNK-LG	UNK-LG	LEAD STATUS UNKNOWN
398 NORTH PLAIN ROAD, GREAT BARRINGTON	UNK-LG	UNK-LG	LEAD STATUS UNKNOWN
399 NORTH PLAIN ROAD, GREAT BARRINGTON	UNK-LG	Copper	LEAD STATUS UNKNOWN
400 NORTH PLAIN ROAD, GREAT BARRINGTON	UNK-LG	Copper	LEAD STATUS UNKNOWN
403 NORTH PLAIN ROAD, GREAT BARRINGTON	UNK-LG	Copper	LEAD STATUS UNKNOWN
404 NORTH PLAIN ROAD, GREAT BARRINGTON	UNK-LG	UNK-NOLG	LEAD STATUS UNKNOWN
409 NORTH PLAIN ROAD, GREAT BARRINGTON	UNK-LG	UNK-LG	LEAD STATUS UNKNOWN

Housatonic Water Works Company Lead Service Line Inventory

Inventory Notes:

The **Locational Identifier** is a combination of a unique Site ID and the account street address. There may be multiple services going to a street address.

For additional help identifying service line materials, please contact the Housatonic Water Works Company.

The **Public Side** is defined as the service line pipe material from the water main to curb stop.

The **Private Side** is defined as the service line pipe material from the curb stop to the water meter.

UNK-LG = Unknown material, may contain lead

UNK-NOLG = Unknown material, definitely does not contain lead

LOCATIONAL IDENTIFIER	PUBLIC SERVICE LINE MATERIAL	PRIVATE SERVICE LINE MATERIAL	ENTIRE SERVICE LINE CLASSIFICATION
410 NORTH PLAIN ROAD, GREAT BARRINGTON	UNK-LG	UNK-LG	LEAD STATUS UNKNOWN
413 NORTH PLAIN ROAD, GREAT BARRINGTON	UNK-LG	UNK-LG	LEAD STATUS UNKNOWN
414 NORTH PLAIN ROAD, GREAT BARRINGTON	UNK-LG	UNK-LG	LEAD STATUS UNKNOWN
415 NORTH PLAIN ROAD, GREAT BARRINGTON	UNK-LG	UNK-LG	LEAD STATUS UNKNOWN
359B NORTH PLAIN ROAD, GREAT BARRINGTON	UNK-LG	UNK-NOLG	LEAD STATUS UNKNOWN
NORTH PLAIN ROAD	UNK-LG	UNK-LG	LEAD STATUS UNKNOWN
NORTH PLAIN ROAD	UNK-LG	UNK-LG	LEAD STATUS UNKNOWN
NORTH PLAIN ROAD	UNK-LG	UNK-LG	LEAD STATUS UNKNOWN
NORTH PLAIN ROAD	UNK-LG	UNK-LG	LEAD STATUS UNKNOWN
202 OAK STREET, GREAT BARRINGTON	UNK-LG	UNK-LG	LEAD STATUS UNKNOWN
203 OAK STREET, GREAT BARRINGTON	UNK-LG	UNK-LG	LEAD STATUS UNKNOWN
204 OAK STREET, GREAT BARRINGTON	UNK-LG	UNK-LG	LEAD STATUS UNKNOWN
205 OAK STREET, GREAT BARRINGTON	UNK-LG	UNK-LG	LEAD STATUS UNKNOWN
206 OAK STREET, GREAT BARRINGTON	UNK-LG	UNK-LG	LEAD STATUS UNKNOWN
207 OAK STREET, GREAT BARRINGTON	UNK-LG	UNK-LG	LEAD STATUS UNKNOWN
209 OAK STREET, GREAT BARRINGTON	UNK-LG	UNK-LG	LEAD STATUS UNKNOWN
210 OAK STREET, GREAT BARRINGTON	UNK-LG	UNK-LG	LEAD STATUS UNKNOWN
211 OAK STREET, GREAT BARRINGTON	UNK-LG	UNK-LG	LEAD STATUS UNKNOWN
213 OAK STREET, GREAT BARRINGTON	UNK-LG	UNK-LG	LEAD STATUS UNKNOWN
214 OAK STREET, GREAT BARRINGTON	UNK-LG	UNK-LG	LEAD STATUS UNKNOWN
215 OAK STREET, GREAT BARRINGTON	UNK-LG	UNK-LG	LEAD STATUS UNKNOWN
216 OAK STREET, GREAT BARRINGTON	UNK-LG	UNK-LG	LEAD STATUS UNKNOWN
217 OAK STREET, GREAT BARRINGTON	UNK-LG	Copper	LEAD STATUS UNKNOWN
218 OAK STREET, GREAT BARRINGTON	UNK-LG	UNK-LG	LEAD STATUS UNKNOWN
219 OAK STREET, GREAT BARRINGTON	UNK-LG	UNK-LG	LEAD STATUS UNKNOWN
220 OAK STREET, GREAT BARRINGTON	UNK-LG	Copper	LEAD STATUS UNKNOWN
222 OAK STREET, GREAT BARRINGTON	UNK-LG	UNK-LG	LEAD STATUS UNKNOWN
223 OAK STREET, GREAT BARRINGTON	UNK-LG	UNK-LG	LEAD STATUS UNKNOWN
224 OAK STREET, GREAT BARRINGTON	UNK-LG	UNK-LG	LEAD STATUS UNKNOWN
225 OAK STREET, GREAT BARRINGTON	UNK-LG	UNK-LG	LEAD STATUS UNKNOWN
226 OAK STREET, GREAT BARRINGTON	UNK-LG	UNK-NOLG	LEAD STATUS UNKNOWN
229 OAK STREET, GREAT BARRINGTON	UNK-LG	UNK-LG	LEAD STATUS UNKNOWN
P.O. BOX 417	UNK-LG	UNK-LG	LEAD STATUS UNKNOWN
P.O. BOX 455	UNK-LG	UNK-LG	LEAD STATUS UNKNOWN
P.O. BOX 607	UNK-LG	UNK-LG	LEAD STATUS UNKNOWN
115 PARK STREET NORTH, GREAT BARRINGTON	UNK-LG	Copper	LEAD STATUS UNKNOWN
229 PARK STREET N, GREAT BARRINGTON	UNK-LG	UNK-LG	LEAD STATUS UNKNOWN
230 PARK STREET, GREAT BARRINGTON	UNK-LG	UNK-LG	LEAD STATUS UNKNOWN
243 PARK STREET, GREAT BARRINGTON	UNK-LG	Copper	LEAD STATUS UNKNOWN
244 PARK STREET, GREAT BARRINGTON	UNK-LG	UNK-LG	LEAD STATUS UNKNOWN
246 PARK STREET, GREAT BARRINGTON	UNK-LG	UNK-NOLG	LEAD STATUS UNKNOWN
247 PARK STREET, GREAT BARRINGTON	UNK-LG	UNK-LG	LEAD STATUS UNKNOWN
248 PARK STREET, GREAT BARRINGTON	UNK-LG	Copper	LEAD STATUS UNKNOWN
249 PARK STREET, GREAT BARRINGTON	UNK-LG	UNK-LG	LEAD STATUS UNKNOWN
252 PARK STREET, GREAT BARRINGTON	UNK-LG	UNK-LG	LEAD STATUS UNKNOWN
254 PARK STREET, GREAT BARRINGTON	UNK-LG	Copper	LEAD STATUS UNKNOWN
256 PARK STREET, GREAT BARRINGTON	UNK-LG	Galvanized Steel	GALVANIZED REQUIRING REPLACEMENT
259 PARK STREET, GREAT BARRINGTON	Brass	Brass	LEAD STATUS UNKNOWN
260 PARK STREET, GREAT BARRINGTON	UNK-LG	Galvanized Steel	GALVANIZED REQUIRING REPLACEMENT
262 PARK STREET, GREAT BARRINGTON	Copperopper	Copper	LEAD STATUS UNKNOWN
263 PARK STREET, GREAT BARRINGTON	UNK-LG	Copper	LEAD STATUS UNKNOWN
264 PARK STREET, GREAT BARRINGTON	UNK-LG	UNK-LG	LEAD STATUS UNKNOWN
266 PARK STREET SIDE B, GREAT BARRINGTON	UNK-LG	UNK-LG	LEAD STATUS UNKNOWN
266 PARK STREET UNIT, GREAT BARRINGTON	UNK-LG	UNK-LG	LEAD STATUS UNKNOWN
272 PARK STREET, GREAT BARRINGTON	UNK-LG	UNK-LG	LEAD STATUS UNKNOWN
275 PARK STREET, GREAT BARRINGTON	UNK-LG	UNK-LG	LEAD STATUS UNKNOWN
276 PARK STREET, GREAT BARRINGTON	UNK-LG	UNK-LG	LEAD STATUS UNKNOWN
282 PARK STREET, GREAT BARRINGTON	UNK-LG	UNK-LG	LEAD STATUS UNKNOWN
284 PARK STREET, GREAT BARRINGTON	UNK-LG	UNK-LG	LEAD STATUS UNKNOWN
286 PARK STREET, GREAT BARRINGTON	UNK-LG	UNK-LG	LEAD STATUS UNKNOWN
290 PARK STREET, GREAT BARRINGTON	UNK-LG	UNK-NOLG	LEAD STATUS UNKNOWN
298 PARK STREET, GREAT BARRINGTON	UNK-LG	UNK-LG	LEAD STATUS UNKNOWN
302 PARK STREET, GREAT BARRINGTON	UNK-LG	Copper	LEAD STATUS UNKNOWN
304 PARK STREET, GREAT BARRINGTON	UNK-LG	UNK-LG	LEAD STATUS UNKNOWN
306 PARK STREET, GREAT BARRINGTON	UNK-LG	UNK-LG	LEAD STATUS UNKNOWN
308 PARK STREET, GREAT BARRINGTON	UNK-LG	Copper	LEAD STATUS UNKNOWN
310 PARK STREET, GREAT BARRINGTON	UNK-LG	UNK-LG	LEAD STATUS UNKNOWN
312 PARK STREET, GREAT BARRINGTON	UNK-LG	Plastic	LEAD STATUS UNKNOWN
314 PARK STREET, GREAT BARRINGTON	UNK-LG	Copper	LEAD STATUS UNKNOWN
316 PARK STREET, GREAT BARRINGTON	UNK-LG	UNK-LG	LEAD STATUS UNKNOWN
318 PARK STREET, GREAT BARRINGTON	UNK-LG	UNK-LG	LEAD STATUS UNKNOWN
320 PARK STREET, GREAT BARRINGTON	UNK-LG	UNK-LG	LEAD STATUS UNKNOWN
322 PARK STREET, GREAT BARRINGTON	UNK-LG	UNK-LG	LEAD STATUS UNKNOWN
324 PARK STREET, GREAT BARRINGTON	UNK-LG	UNK-NOLG	LEAD STATUS UNKNOWN
328 PARK STREET, GREAT BARRINGTON	UNK-LG	UNK-LG	LEAD STATUS UNKNOWN
331 PARK STREET, GREAT BARRINGTON	UNK-LG	Copper	LEAD STATUS UNKNOWN
332 PARK STREET, GREAT BARRINGTON	UNK-LG	UNK-LG	LEAD STATUS UNKNOWN
334 PARK STREET, GREAT BARRINGTON	UNK-LG	UNK-LG	LEAD STATUS UNKNOWN

Housatonic Water Works Company Lead Service Line Inventory

Inventory Notes:

The **Locational Identifier** is a combination of a unique Site ID and the account street address. There may be multiple services going to a street address.

For additional help identifying service line materials, please contact the Housatonic Water Works Company.

The **Public Side** is defined as the service line pipe material from the water main to curb stop.

The **Private Side** is defined as the service line pipe material from the curb stop to the water meter.

UNK-LG = Unknown material, may contain lead

UNK-NOLG = Unknown material, definitely does not contain lead

LOCATIONAL IDENTIFIER	PUBLIC SERVICE LINE MATERIAL	PRIVATE SERVICE LINE MATERIAL	ENTIRE SERVICE LINE CLASSIFICATION
340 PARK STREET, GREAT BARRINGTON	UNK-LG	UNK-LG	LEAD STATUS UNKNOWN
342 PARK STREET, GREAT BARRINGTON	UNK-LG	UNK-LG	LEAD STATUS UNKNOWN
344 PARK STREET, GREAT BARRINGTON	UNK-LG	UNK-LG	LEAD STATUS UNKNOWN
354 PARK STREET, GREAT BARRINGTON	UNK-LG	UNK-LG	LEAD STATUS UNKNOWN
362 PARK STREET, GREAT BARRINGTON	UNK-LG	UNK-LG	LEAD STATUS UNKNOWN
364 PARK STREET, GREAT BARRINGTON	UNK-LG	UNK-LG	LEAD STATUS UNKNOWN
366 PARK STREET, GREAT BARRINGTON	UNK-LG	UNK-LG	LEAD STATUS UNKNOWN
367 PARK STREET, GREAT BARRINGTON	UNK-LG	UNK-LG	LEAD STATUS UNKNOWN
368 PARK STREET, GREAT BARRINGTON	UNK-LG	UNK-LG	LEAD STATUS UNKNOWN
370 PARK STREET, GREAT BARRINGTON	UNK-LG	UNK-LG	LEAD STATUS UNKNOWN
371 PARK STREET, GREAT BARRINGTON	UNK-LG	UNK-LG	LEAD STATUS UNKNOWN
372 PARK STREET, GREAT BARRINGTON	UNK-LG	UNK-LG	LEAD STATUS UNKNOWN
374 PARK STREET, GREAT BARRINGTON	UNK-LG	UNK-LG	LEAD STATUS UNKNOWN
375 PARK STREET, GREAT BARRINGTON	UNK-LG	UNK-LG	LEAD STATUS UNKNOWN
376 PARK STREET, GREAT BARRINGTON	UNK-LG	UNK-LG	LEAD STATUS UNKNOWN
378 PARK STREET, GREAT BARRINGTON	UNK-LG	UNK-LG	LEAD STATUS UNKNOWN
380 PARK STREET, GREAT BARRINGTON	UNK-LG	UNK-LG	LEAD STATUS UNKNOWN
382 PARK STREET, GREAT BARRINGTON	UNK-LG	UNK-LG	LEAD STATUS UNKNOWN
384 PARK STREET, GREAT BARRINGTON	UNK-LG	Copper	LEAD STATUS UNKNOWN
386 PARK STREET, GREAT BARRINGTON	UNK-LG	UNK-LG	LEAD STATUS UNKNOWN
388 PARK STREET, GREAT BARRINGTON	UNK-LG	Galvanized Steel	GALVANIZED REQUIRING REPLACEMENT
390 PARK STREET, GREAT BARRINGTON	UNK-LG	UNK-LG	LEAD STATUS UNKNOWN
394 PARK STREET, GREAT BARRINGTON	UNK-LG	UNK-LG	LEAD STATUS UNKNOWN
402 PARK STREET, GREAT BARRINGTON	UNK-LG	UNK-LG	LEAD STATUS UNKNOWN
414 PARK STREET, GREAT BARRINGTON	UNK-LG	UNK-NOLG	LEAD STATUS UNKNOWN
420 PARK STREET, GREAT BARRINGTON	UNK-LG	UNK-LG	LEAD STATUS UNKNOWN
420 PARK STREET, GREAT BARRINGTON	UNK-LG	UNK-LG	LEAD STATUS UNKNOWN
421 PARK STREET, GREAT BARRINGTON	UNK-LG	Copper	LEAD STATUS UNKNOWN
430 PARK STREET, GREAT BARRINGTON	UNK-LG	UNK-LG	LEAD STATUS UNKNOWN
430 PARK STREET, GREAT BARRINGTON	UNK-LG	UNK-LG	LEAD STATUS UNKNOWN
318A PARK STREET, GREAT BARRINGTON	UNK-LG	UNK-LG	LEAD STATUS UNKNOWN
PARK STREET	UNK-LG	UNK-LG	LEAD STATUS UNKNOWN
PARK STREET	UNK-LG	UNK-LG	LEAD STATUS UNKNOWN
PARK STREET - RISING PUMP	UNK-LG	UNK-LG	LEAD STATUS UNKNOWN
PARK STREET	UNK-LG	UNK-LG	LEAD STATUS UNKNOWN
PARK STREET	UNK-LG	UNK-LG	LEAD STATUS UNKNOWN
PARK STREET	UNK-LG	UNK-LG	LEAD STATUS UNKNOWN
PARK STREET / APT HS	UNK-LG	UNK-LG	LEAD STATUS UNKNOWN
PARK STREET, HOUSATONIC	UNK-LG	UNK-LG	LEAD STATUS UNKNOWN
PARK STREET-SOUTH MILL	UNK-LG	UNK-LG	LEAD STATUS UNKNOWN
PARK STREET	UNK-LG	UNK-LG	LEAD STATUS UNKNOWN
PARK STREET	UNK-LG	UNK-LG	LEAD STATUS UNKNOWN
206 PINE STREET, GREAT BARRINGTON	UNK-LG	UNK-LG	LEAD STATUS UNKNOWN
208 PINE STREET, GREAT BARRINGTON	UNK-LG	UNK-LG	LEAD STATUS UNKNOWN
209 PINE STREET, GREAT BARRINGTON	UNK-LG	UNK-LG	LEAD STATUS UNKNOWN
210 PINE STREET, GREAT BARRINGTON	UNK-LG	UNK-LG	LEAD STATUS UNKNOWN
211 PINE STREET, GREAT BARRINGTON	UNK-LG	UNK-LG	LEAD STATUS UNKNOWN
212 PINE STREET, GREAT BARRINGTON	UNK-LG	Galvanized Steel	GALVANIZED REQUIRING REPLACEMENT
213 PINE STREET, GREAT BARRINGTON	UNK-LG	UNK-LG	LEAD STATUS UNKNOWN
214 PINE STREET, GREAT BARRINGTON	UNK-LG	Copper	LEAD STATUS UNKNOWN
215 PINE STREET, GREAT BARRINGTON	UNK-LG	Copper	LEAD STATUS UNKNOWN
95 PIXLEY HILL ROAD, GREAT BARRINGTON	UNK-LG	UNK-LG	LEAD STATUS UNKNOWN
97 PIXLEY HILL ROAD, GREAT BARRINGTON	UNK-LG	Copper	LEAD STATUS UNKNOWN
202 PLEASANT STREET, GREAT BARRINGTON	UNK-LG	UNK-LG	LEAD STATUS UNKNOWN
204 PLEASANT STREET, GREAT BARRINGTON	UNK-LG	UNK-LG	LEAD STATUS UNKNOWN
206 PLEASANT STREET, GREAT BARRINGTON	UNK-LG	UNK-LG	LEAD STATUS UNKNOWN
208 PLEASANT STREET, GREAT BARRINGTON	UNK-LG	UNK-LG	LEAD STATUS UNKNOWN
210 PLEASANT STREET, GREAT BARRINGTON	UNK-LG	UNK-LG	LEAD STATUS UNKNOWN
212 PLEASANT STREET, GREAT BARRINGTON	UNK-LG	UNK-LG	LEAD STATUS UNKNOWN
214 PLEASANT STREET, GREAT BARRINGTON	UNK-LG	UNK-LG	LEAD STATUS UNKNOWN
216 PLEASANT STREET, GREAT BARRINGTON	UNK-LG	UNK-LG	LEAD STATUS UNKNOWN
220 PLEASANT STREET, GREAT BARRINGTON	UNK-LG	UNK-LG	LEAD STATUS UNKNOWN
222 PLEASANT STREET, GREAT BARRINGTON	UNK-LG	UNK-LG	LEAD STATUS UNKNOWN
224 PLEASANT STREET, GREAT BARRINGTON	UNK-LG	UNK-LG	LEAD STATUS UNKNOWN
226 PLEASANT STREET, GREAT BARRINGTON	UNK-LG	UNK-LG	LEAD STATUS UNKNOWN
226 PLEASANT STREET, GREAT BARRINGTON	UNK-LG	UNK-LG	LEAD STATUS UNKNOWN
206 PROSPECT STREET, GREAT BARRINGTON	UNK-LG	UNK-LG	LEAD STATUS UNKNOWN
206 PROSPECT STREET, GREAT BARRINGTON	UNK-LG	UNK-LG	LEAD STATUS UNKNOWN
207 PROSPECT STREET, GREAT BARRINGTON	UNK-LG	UNK-LG	LEAD STATUS UNKNOWN
209 PROSPECT STREET, GREAT BARRINGTON	UNK-LG	UNK-LG	LEAD STATUS UNKNOWN
210 PROSPECT STREET, GREAT BARRINGTON	UNK-LG	UNK-NOLG	LEAD STATUS UNKNOWN
211 PROSPECT STREET, GREAT BARRINGTON	UNK-LG	UNK-LG	LEAD STATUS UNKNOWN
212 PROSPECT STREET, GREAT BARRINGTON	UNK-LG	UNK-LG	LEAD STATUS UNKNOWN
213 PROSPECT STREET, GREAT BARRINGTON	UNK-LG	UNK-LG	LEAD STATUS UNKNOWN
214 PROSPECT STREET, GREAT BARRINGTON	UNK-LG	UNK-NOLG	LEAD STATUS UNKNOWN
215 PROSPECT STREET, GREAT BARRINGTON	UNK-LG	UNK-LG	LEAD STATUS UNKNOWN
218 PROSPECT STREET, GREAT BARRINGTON	UNK-LG	UNK-LG	LEAD STATUS UNKNOWN
221 PROSPECT STREET, GREAT BARRINGTON	UNK-LG	UNK-LG	LEAD STATUS UNKNOWN

Housatonic Water Works Company Lead Service Line Inventory

Inventory Notes:

The **Locational Identifier** is a combination of a unique Site ID and the account street address. There may be multiple services going to a street address.

For additional help identifying service line materials, please contact the Housatonic Water Works Company.

The **Public Side** is defined as the service line pipe material from the water main to curb stop.

The **Private Side** is defined as the service line pipe material from the curb stop to the water meter.

UNK-LG = Unknown material, may contain lead

UNK-NOLG = Unknown material, definitely does not contain lead

LOCATIONAL IDENTIFIER	PUBLIC SERVICE LINE MATERIAL	PRIVATE SERVICE LINE MATERIAL	ENTIRE SERVICE LINE CLASSIFICATION
224 PROSPECT STREET, GREAT BARRINGTON	UNK-LG	UNK-LG	LEAD STATUS UNKNOWN
226 PROSPECT STREET, GREAT BARRINGTON	UNK-LG	Galvanized Steel	GALVANIZED REQUIRING REPLACEMENT
227 PROSPECT STREET, GREAT BARRINGTON	UNK-LG	UNK-LG	LEAD STATUS UNKNOWN
228 PROSPECT STREET, GREAT BARRINGTON	UNK-LG	UNK-LG	LEAD STATUS UNKNOWN
229 PROSPECT STREET, GREAT BARRINGTON	UNK-LG	UNK-LG	LEAD STATUS UNKNOWN
230 PROSPECT STREET, GREAT BARRINGTON	UNK-LG	UNK-LG	LEAD STATUS UNKNOWN
1074 R MAIN STREET, GREAT BARRINGTON	UNK-LG	UNK-LG	LEAD STATUS UNKNOWN
5 RAMSDELL ROAD, GREAT BARRINGTON	UNK-LG	UNK-LG	LEAD STATUS UNKNOWN
5 RAMSDELL ROAD, GREAT BARRINGTON	UNK-LG	UNK-LG	LEAD STATUS UNKNOWN
5 RAMSDELL ROAD, GREAT BARRINGTON	UNK-LG	UNK-LG	LEAD STATUS UNKNOWN
6 RAMSDELL ROAD, GREAT BARRINGTON	UNK-LG	UNK-NOLG	LEAD STATUS UNKNOWN
8 RAMSDELL ROAD, GREAT BARRINGTON	UNK-LG	UNK-LG	LEAD STATUS UNKNOWN
9 RAMSDELL ROAD, GREAT BARRINGTON	UNK-LG	UNK-LG	LEAD STATUS UNKNOWN
10 RAMSDELL ROAD, GREAT BARRINGTON	UNK-LG	UNK-LG	LEAD STATUS UNKNOWN
11 RAMSDELL ROAD, GREAT BARRINGTON	UNK-LG	UNK-LG	LEAD STATUS UNKNOWN
3 RYAN TERRACE, GREAT BARRINGTON	UNK-LG	UNK-LG	LEAD STATUS UNKNOWN
3 RYAN TERRACE, GREAT BARRINGTON	UNK-LG	UNK-LG	LEAD STATUS UNKNOWN
4 RYAN TERRACE, GREAT BARRINGTON	UNK-LG	UNK-LG	LEAD STATUS UNKNOWN
5 RYAN TERRACE, GREAT BARRINGTON	UNK-LG	Copper	LEAD STATUS UNKNOWN
7 RYAN TERRACE, GREAT BARRINGTON	UNK-LG	UNK-LG	LEAD STATUS UNKNOWN
9 RYAN TERRACE, GREAT BARRINGTON	UNK-LG	UNK-LG	LEAD STATUS UNKNOWN
11 RYAN TERRACE, GREAT BARRINGTON	UNK-LG	UNK-LG	LEAD STATUS UNKNOWN
203 SOUTH STREET, GREAT BARRINGTON	UNK-LG	UNK-LG	LEAD STATUS UNKNOWN
204 SOUTH STREET, GREAT BARRINGTON	UNK-LG	Plastic	LEAD STATUS UNKNOWN
207 SOUTH STREET, GREAT BARRINGTON	UNK-LG	UNK-NOLG	LEAD STATUS UNKNOWN
208 SOUTH STREET, GREAT BARRINGTON	UNK-LG	UNK-LG	LEAD STATUS UNKNOWN
210 SOUTH STREET, GREAT BARRINGTON	UNK-LG	Copper	LEAD STATUS UNKNOWN
211 SOUTH STREET, GREAT BARRINGTON	UNK-LG	UNK-LG	LEAD STATUS UNKNOWN
212 SOUTH STREET, GREAT BARRINGTON	UNK-LG	UNK-LG	LEAD STATUS UNKNOWN
213 SOUTH STREET, GREAT BARRINGTON	UNK-LG	UNK-LG	LEAD STATUS UNKNOWN
214 SOUTH STREET, GREAT BARRINGTON	UNK-LG	UNK-LG	LEAD STATUS UNKNOWN
216 SOUTH STREET, GREAT BARRINGTON	UNK-LG	UNK-LG	LEAD STATUS UNKNOWN
219 SOUTH STREET, GREAT BARRINGTON	UNK-LG	UNK-LG	LEAD STATUS UNKNOWN
219 SOUTH STREET, GREAT BARRINGTON	UNK-LG	UNK-LG	LEAD STATUS UNKNOWN
221 SOUTH STREET, GREAT BARRINGTON	UNK-LG	UNK-LG	LEAD STATUS UNKNOWN
8 SPRUCE STREET, GREAT BARRINGTON	UNK-LG	UNK-NOLG	LEAD STATUS UNKNOWN
10 SPRUCE STREET, GREAT BARRINGTON	UNK-LG	UNK-NOLG	LEAD STATUS UNKNOWN
12 SPRUCE STREET, GREAT BARRINGTON	UNK-LG	UNK-NOLG	LEAD STATUS UNKNOWN
14 SPRUCE STREET, GREAT BARRINGTON	UNK-LG	UNK-NOLG	LEAD STATUS UNKNOWN
16 SPRUCE STREET, GREAT BARRINGTON	UNK-LG	UNK-NOLG	LEAD STATUS UNKNOWN
WYANTENUCK STREET	UNK-LG	UNK-LG	LEAD STATUS UNKNOWN
TOWN HALL	UNK-LG	UNK-LG	LEAD STATUS UNKNOWN
TOWN HALL	UNK-LG	UNK-LG	LEAD STATUS UNKNOWN
4 VANDEUSENVILLE ROAD, GREAT BARRINGTON	UNK-LG	UNK-LG	LEAD STATUS UNKNOWN
10 VANDEUSENVILLE ROAD, GREAT BARRINGTON	UNK-LG	UNK-LG	LEAD STATUS UNKNOWN
20 VANDEUSENVILLE ROAD, GREAT BARRINGTON	UNK-LG	UNK-LG	LEAD STATUS UNKNOWN
21 VANDEUSENVILLE ROAD, GREAT BARRINGTON	UNK-LG	Copper	LEAD STATUS UNKNOWN
25 VANDEUSENVILLE ROAD, GREAT BARRINGTON	UNK-LG	UNK-LG	LEAD STATUS UNKNOWN
25 VANDEUSENVILLE ROAD, GREAT BARRINGTON	UNK-LG	UNK-NOLG	LEAD STATUS UNKNOWN
27 VANDEUSENVILLE ROAD, GREAT BARRINGTON	UNK-LG	UNK-LG	LEAD STATUS UNKNOWN
29 VANDEUSENVILLE ROAD, GREAT BARRINGTON	UNK-LG	UNK-NOLG	LEAD STATUS UNKNOWN
31 VANDEUSENVILLE ROAD, GREAT BARRINGTON	UNK-LG	UNK-NOLG	LEAD STATUS UNKNOWN
33 VANDEUSENVILLE ROAD, GREAT BARRINGTON	UNK-LG	UNK-NOLG	LEAD STATUS UNKNOWN
35 VANDEUSENVILLE ROAD, GREAT BARRINGTON	UNK-LG	UNK-NOLG	LEAD STATUS UNKNOWN
37 VANDEUSENVILLE ROAD, GREAT BARRINGTON	UNK-LG	UNK-LG	LEAD STATUS UNKNOWN
39 VANDEUSENVILLE ROAD, GREAT BARRINGTON	UNK-LG	Copper	LEAD STATUS UNKNOWN
41 VANDEUSENVILLE ROAD, GREAT BARRINGTON	UNK-LG	UNK-LG	LEAD STATUS UNKNOWN
45 VANDEUSENVILLE ROAD, GREAT BARRINGTON	UNK-LG	UNK-NOLG	LEAD STATUS UNKNOWN
47 VANDEUSENVILLE ROAD, GREAT BARRINGTON	UNK-LG	UNK-LG	LEAD STATUS UNKNOWN
49 VANDEUSENVILLE ROAD, GREAT BARRINGTON	UNK-LG	UNK-LG	LEAD STATUS UNKNOWN
49 VANDEUSENVILLE ROAD, GREAT BARRINGTON	UNK-LG	UNK-LG	LEAD STATUS UNKNOWN
71 VANDEUSENVILLE ROAD, GREAT BARRINGTON	UNK-LG	UNK-LG	LEAD STATUS UNKNOWN
73 VANDEUSENVILLE ROAD, GREAT BARRINGTON	UNK-LG	UNK-LG	LEAD STATUS UNKNOWN
75 VANDEUSENVILLE ROAD, GREAT BARRINGTON	UNK-LG	UNK-LG	LEAD STATUS UNKNOWN
81 VANDEUSENVILLE ROAD, GREAT BARRINGTON	UNK-LG	UNK-LG	LEAD STATUS UNKNOWN
83 VANDEUSENVILLE ROAD, GREAT BARRINGTON	UNK-LG	UNK-LG	LEAD STATUS UNKNOWN
89 VANDEUSENVILLE ROAD, GREAT BARRINGTON	UNK-LG	UNK-LG	LEAD STATUS UNKNOWN
91 VANDEUSENVILLE ROAD, GREAT BARRINGTON	UNK-LG	UNK-LG	LEAD STATUS UNKNOWN
93 VANDEUSENVILLE ROAD, GREAT BARRINGTON	UNK-LG	UNK-LG	LEAD STATUS UNKNOWN
95 VANDEUSENVILLE ROAD, GREAT BARRINGTON	UNK-LG	UNK-LG	LEAD STATUS UNKNOWN
97 VANDEUSENVILLE ROAD, GREAT BARRINGTON	UNK-LG	Copper	LEAD STATUS UNKNOWN
99 VANDEUSENVILLE ROAD, GREAT BARRINGTON	UNK-LG	Galvanized Steel	GALVANIZED REQUIRING REPLACEMENT
VANDEUSENVILLE ROAD	UNK-LG	UNK-LG	LEAD STATUS UNKNOWN
VANDEUSENVILLE ROAD	UNK-LG	UNK-LG	LEAD STATUS UNKNOWN
VANDEUSENVILLE ROAD	UNK-LG	UNK-LG	LEAD STATUS UNKNOWN
VANDEUSENVILLE ROAD	UNK-LG	UNK-LG	LEAD STATUS UNKNOWN
VANDEUSENVILLE ROAD	UNK-LG	UNK-LG	LEAD STATUS UNKNOWN
VANDEUSENVILLE ROAD/OFFI	UNK-LG	UNK-LG	LEAD STATUS UNKNOWN
2 WALNUT STREET, GREAT BARRINGTON	UNK-LG	UNK-NOLG	LEAD STATUS UNKNOWN

Housatonic Water Works Company Lead Service Line Inventory

Inventory Notes:

The **Locational Identifier** is a combination of a unique Site ID and the account street address. There may be multiple services going to a street address.

For additional help identifying service line materials, please contact the Housatonic Water Works Company.

The **Public Side** is defined as the service line pipe material from the water main to curb stop.

The **Private Side** is defined as the service line pipe material from the curb stop to the water meter.

UNK-LG = Unknown material, may contain lead

UNK-NOLG = Unknown material, definitely does not contain lead

LOCATIONAL IDENTIFIER	PUBLIC SERVICE LINE MATERIAL	PRIVATE SERVICE LINE MATERIAL	ENTIRE SERVICE LINE CLASSIFICATION
5 WALNUT STREET, GREAT BARRINGTON	UNK-LG	UNK-LG	LEAD STATUS UNKNOWN
6 WALNUT STREET, GREAT BARRINGTON	UNK-LG	UNK-LG	LEAD STATUS UNKNOWN
7 WALNUT STREET, GREAT BARRINGTON	UNK-LG	UNK-NOLG	LEAD STATUS UNKNOWN
8 WALNUT STREET, GREAT BARRINGTON	UNK-LG	UNK-LG	LEAD STATUS UNKNOWN
11 WALNUT STREET, GREAT BARRINGTON	UNK-LG	UNK-LG	LEAD STATUS UNKNOWN
12 WALNUT STREET, GREAT BARRINGTON	UNK-LG	Plastic	LEAD STATUS UNKNOWN
1 WATER STREET, WEST STOCKBRIDGE	UNK-LG	UNK-LG	LEAD STATUS UNKNOWN
2 WATER STREET, WEST STOCKBRIDGE	UNK-LG	UNK-LG	LEAD STATUS UNKNOWN
3 WATER STREET, WEST STOCKBRIDGE	UNK-LG	Copper	LEAD STATUS UNKNOWN
5 WATER STREET, WEST STOCKBRIDGE	UNK-LG	UNK-LG	LEAD STATUS UNKNOWN
6 WATER STREET, WEST STOCKBRIDGE	UNK-LG	UNK-LG	LEAD STATUS UNKNOWN
7 WATER STREET, WEST STOCKBRIDGE	UNK-LG	Plastic	LEAD STATUS UNKNOWN
8 WATER STREET, WEST STOCKBRIDGE	UNK-LG	UNK-LG	LEAD STATUS UNKNOWN
10 WATER STREET, WEST STOCKBRIDGE	UNK-LG	UNK-LG	LEAD STATUS UNKNOWN
8 WAUBECK STREET, GREAT BARRINGTON	UNK-LG	UNK-LG	LEAD STATUS UNKNOWN
1031 WEST MAIN STREET, GREAT BARRINGTON	UNK-LG	UNK-NOLG	LEAD STATUS UNKNOWN
3 WILLIAMS STREET, GREAT BARRINGTON	UNK-LG	Galvanized Steel	GALVANIZED REQUIRING REPLACEMENT
4 WILLIAMS STREET, GREAT BARRINGTON	UNK-LG	UNK-LG	LEAD STATUS UNKNOWN
5 WILLIAMS STREET, GREAT BARRINGTON	UNK-LG	UNK-NOLG	LEAD STATUS UNKNOWN
11 WRIGHT LANE, GREAT BARRINGTON	UNK-LG	UNK-LG	LEAD STATUS UNKNOWN
12 WRIGHT LANE, GREAT BARRINGTON	UNK-LG	UNK-LG	LEAD STATUS UNKNOWN
13 WRIGHT LANE, GREAT BARRINGTON	UNK-LG	UNK-LG	LEAD STATUS UNKNOWN
15 WRIGHT LANE, GREAT BARRINGTON	UNK-LG	UNK-LG	LEAD STATUS UNKNOWN
16 WRIGHT LANE, GREAT BARRINGTON	UNK-LG	UNK-LG	LEAD STATUS UNKNOWN
17 WRIGHT LANE, GREAT BARRINGTON	UNK-LG	UNK-LG	LEAD STATUS UNKNOWN
7 WYANTENUCK STREET, GREAT BARRINGTON	UNK-LG	Copper	LEAD STATUS UNKNOWN
9 WYANTENUCK STREET, GREAT BARRINGTON	UNK-LG	Copper	LEAD STATUS UNKNOWN
11 WYANTENUCK STREET, GREAT BARRINGTON	UNK-LG	UNK-LG	LEAD STATUS UNKNOWN
12 WYANTENUCK STREET, GREAT BARRINGTON	UNK-LG	UNK-LG	LEAD STATUS UNKNOWN
13 WYANTENUCK STREET, GREAT BARRINGTON	UNK-LG	UNK-LG	LEAD STATUS UNKNOWN
14 WYANTENUCK STREET, GREAT BARRINGTON	UNK-LG	UNK-LG	LEAD STATUS UNKNOWN
15 WYANTENUCK STREET, GREAT BARRINGTON	UNK-LG	Plastic	LEAD STATUS UNKNOWN
16 WYANTENUCK STREET, GREAT BARRINGTON	UNK-LG	UNK-LG	LEAD STATUS UNKNOWN
17 WYANTENUCK STREET, GREAT BARRINGTON	UNK-LG	UNK-LG	LEAD STATUS UNKNOWN
18 WYANTENUCK STREET, GREAT BARRINGTON	UNK-LG	UNK-LG	LEAD STATUS UNKNOWN
19 WYANTENUCK STREET, GREAT BARRINGTON	UNK-LG	UNK-LG	LEAD STATUS UNKNOWN
20 WYANTENUCK STREET, GREAT BARRINGTON	UNK-LG	UNK-LG	LEAD STATUS UNKNOWN
21 WYANTENUCK STREET, GREAT BARRINGTON	UNK-LG	UNK-NOLG	LEAD STATUS UNKNOWN
24 WYANTENUCK STREET, GREAT BARRINGTON	UNK-LG	UNK-LG	LEAD STATUS UNKNOWN
25 WYANTENUCK STREET, GREAT BARRINGTON	UNK-LG	UNK-LG	LEAD STATUS UNKNOWN
26 WYANTENUCK STREET, GREAT BARRINGTON	UNK-LG	UNK-LG	LEAD STATUS UNKNOWN
27 WYANTENUCK STREET, GREAT BARRINGTON	UNK-LG	UNK-LG	LEAD STATUS UNKNOWN
28 WYANTENUCK STREET, GREAT BARRINGTON	UNK-LG	UNK-LG	LEAD STATUS UNKNOWN
29 WYANTENUCK STREET, GREAT BARRINGTON	UNK-LG	UNK-LG	LEAD STATUS UNKNOWN
30 WYANTENUCK STREET, GREAT BARRINGTON	UNK-LG	UNK-LG	LEAD STATUS UNKNOWN